

Lalor West Primary School (5074)

2008 School Level Report

Please check the data in this report. If, after comparing it with your own records, you deem it to be incorrect or incomplete, follow the directions on the following website:

- <http://www.education.vic.gov.au/management/schoolimprovement/performance/performancedata/>
then select 'School Performance Reports'.
-
-

Contents

	Page No.
Privacy	3
SFO Density and LBOTE	4
Assessment of Reading Prep to Year 2	5-6
Teacher Judgments against the VELs	7-15
NAPLAN - Reading	16
- Writing	17
- Numeracy	18
AIM - Reading	19
- Mathematics	20
Teacher Assessment of Student Progress (PSD students)	21-22
Enrolment	23
Student Absence	24
Opinion Surveys - Parent	25
- Staff	26
Performance & Development Culture	27
Staff Sick Leave	28
Teaching Staff Retention	29
Bank Balances	30

Privacy

When reporting on the school's performance to the school community, care must be taken to avoid the disclosure of information that can directly or indirectly identify an individual. This may be a particular issue when reporting on the achievement of specific cohorts of students or the opinions of staff where there are small numbers.

In situations where privacy cannot be assured, schools may wish to report on the mean result or provide a written comment on school, year level or cohort performance.

Where the School Level Report is provided to school council members as part of any annual reporting process, or used for discussion on a school's performance, such as in consultation with the school community in the school self-evaluation process, it is important to remind school community members of their duty to only use this information for the purpose it was provided, and that the material must be kept confidential.

It is important to note that information that identifies an individual or can be used with other readily available information to identify a person is now protected by the *Information Privacy Act 2000* (<http://www.education.vic.gov.au/about/deptpolicies/informationprivacy.htm>).

SFO Density and LBOTE

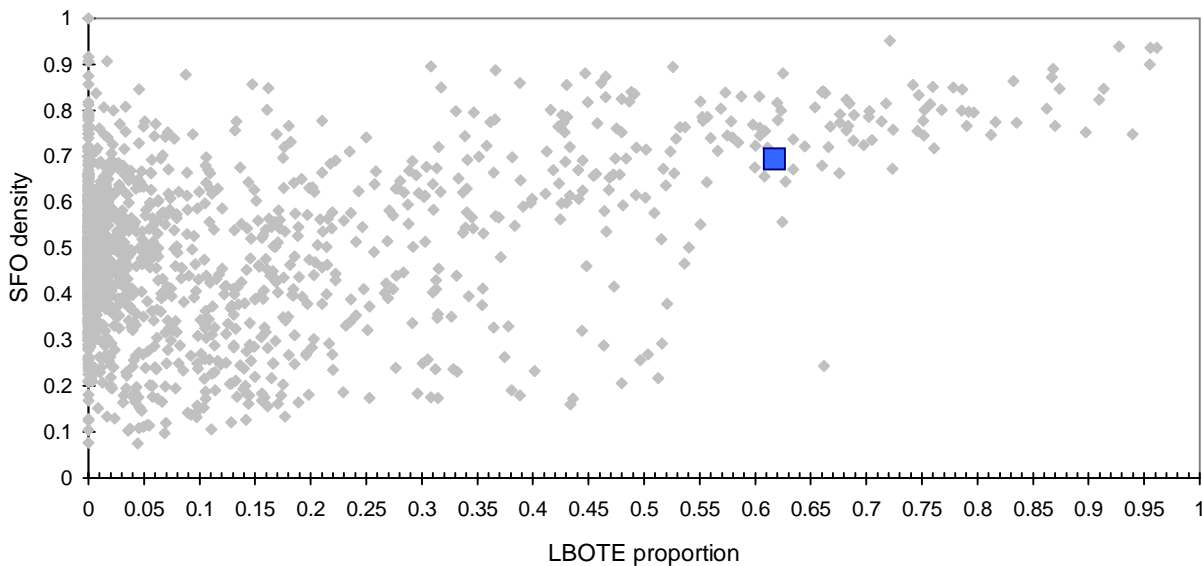
School no: 5074

School name: Lalor West Primary School

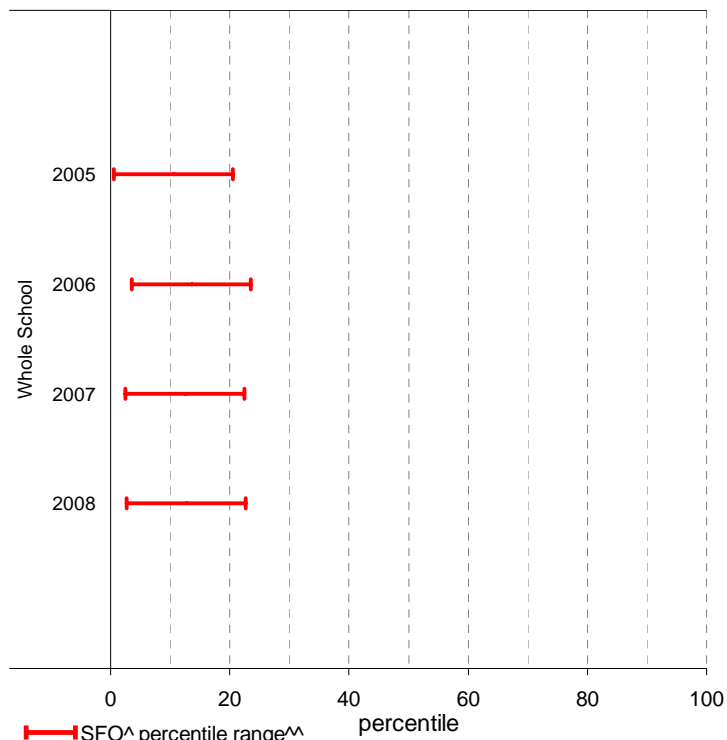
Explanation: The chart below plots the school's 2008 SFO (Student Family Occupation) density[^] and LBOTE (Language Background Other Than English) proportion* against that of all government schools. This school is highlighted as a square on the chart.

	2001	2002	2003	2004	2005	2006	2007	2008
SFO density [^] :					0.70	0.68	0.69	0.69
LBOTE proportion*:	0.56	0.55	0.59	0.64	0.64	0.66	0.65	0.62

School's 2008 SFO density and LBOTE proportion against that of all government schools



School's SFO[^] percentile range^{^^} over time



Notes: [^] The higher the SFO density, the lower the SFO percentile and the lower the socio-economic status (SES).

^{^^} The school's SFO percentile range shows the 20% of schools with an SFO Density most like this school.

* From 2007, a student is LBOTE if either the student or one parent/guardian speaks a language other than English at home. Prior to 2007, a student is LBOTE if the student or one of the parents was born in a non-English speaking country.

Assessment of Reading: Prep to Year 2

School no: 5074

School name: Lalor West Primary School

Explanation: Students' ability to read unsighted text is assessed at the end of each year. The data presented here includes 'deemed not capable' students.

More detailed information (including data where deemed not capable students are excluded) is available in the Assessment of Reading report, available from the School Performance Reports website.

Source of data: Data transmitted from school to DEECD via an online web-form.

	Prep										Year 1										Year 2												
	School									State	School									State	School									State			
	2004		2005		2006		2007		2008		2008	2004		2005		2006		2007		2008		2008	2004		2005		2006		2007		2008		2008
	(No.)	%	(No.)	%	(No.)	%	(No.)	%	(No.)	%	(No.)	%	(No.)	%	(No.)	%	(No.)	%	(No.)	%	(No.)	%	(No.)	%	(No.)	%	(No.)	%	(No.)	%	(No.)	%	
Level 1																																	
100%	(16)	37.2	(10)	26.3	(11)	34.4	(11)	26.2	(32)	86.5	69.0	(38)	90.5	(39)	88.6	(34)	82.9	(24)	75.0	(33)	100.0	94.7											
90-99%	(19)	44.2	(18)	47.4	(11)	34.4	(25)	59.5	(4)	10.8	25.4	(4)	9.5	(5)	11.4	(7)	17.1	(7)	21.9														
80-89%	(3)	7.0	(5)	13.2	(4)	12.5	(3)	7.1	(1)	2.7	2.3							(1)	3.1														
51-79%	(4)	9.3	(2)	5.3	(4)	12.5					1.5																						
50% or below	(1)	2.3	(3)	7.9	(2)	6.2	(3)	7.1			1.7																						
Total	(43)	100.0	(38)	100.0	(32)	100.0	(42)	100.0	(37)	100.0	100.0	(42)	100.0	(44)	100.0	(41)	100.0	(32)	100.0	(33)	100.0	100.0											
Subtotal 90-100%	(35)	81.4	(28)	73.7	(22)	68.8	(36)	85.7	(36)	97.3	94.5	(42)	100.0	(44)	100.0	(41)	100.0	(31)	96.9	(33)	100.0	99.4											
Level 5																																	
100%	(4)	9.3	(3)	7.9	(6)	18.8	(5)	11.9	(19)	51.4	45.3	(28)	66.7	(23)	52.3	(21)	51.2	(17)	53.1	(30)	90.9	81.0	(36)	76.6	(33)	73.3	(24)	58.5	(31)	81.6	(29)	87.9	90.4
90-99%	(15)	34.9	(11)	28.9	(11)	34.4	(23)	54.8	(14)	37.8	36.1	(14)	33.3	(17)	38.6	(20)	48.8	(14)	43.8	(2)	6.1	16.9	(11)	23.4	(11)	24.4	(17)	41.5	(7)	18.4	(2)	6.1	8.8
80-89%	(3)	7.0	(3)	7.9	(2)	6.2	(1)	2.4	(1)	2.7	5.2			(1)	2.3																		
51-79%	(8)	18.6	(4)	10.5	(3)	9.4					3.6			(1)	2.3																		
50% or below	(13)	30.2	(17)	44.7	(10)	31.2	(13)	31.0	(3)	8.1	9.8			(2)	4.5			(1)	3.1	(1)	3.0	1.0			(1)	2.2							
Total	(43)	100.0	(38)	100.0	(32)	100.0	(42)	100.0	(37)	100.0	100.0	(42)	100.0	(44)	100.0	(41)	100.0	(32)	100.0	(33)	100.0	100.0	(47)	100.0	(45)	100.0	(41)	100.0	(38)	100.0	(33)	100.0	100.0
Subtotal 90-100%	(19)	44.2	(14)	36.8	(17)	53.1	(28)	66.7	(33)	89.2	81.3	(42)	100.0	(40)	90.9	(41)	100.0	(31)	96.9	(32)	97.0	97.9	(47)	100.0	(44)	97.8	(41)	100.0	(38)	100.0	(31)	93.9	99.2
Level 15																																	
100%												(4)	9.5	(5)	11.4	(4)	9.8	(8)	25.0	(7)	21.2	37.1	(16)	34.0	(13)	28.9	(11)	26.8	(13)	34.2	(13)	39.4	62.9
90-99%												(26)	61.9	(22)	50.0	(21)	51.2	(17)	53.1	(21)	63.6	49.2	(28)	59.6	(28)	62.2	(26)	63.4	(25)	65.8	(18)	54.5	33.2
80-89%												(7)	16.7	(4)	9.1	(9)	22.0	(3)	9.4	(3)	9.1	6.3	(3)	6.4		(2)	4.9					1.8	
51-79%												(1)	2.4	(8)	18.2	(6)	14.6			(1)	3.0	3.0			(3)	6.7	(1)	2.4				0.8	
50% or below												(4)	9.5	(5)	11.4	(1)	2.4	(4)	12.5	(1)	3.0	4.3			(1)	2.2	(1)	2.4		(2)	6.1	1.4	
Total												(42)	100.0	(44)	100.0	(41)	100.0	(32)	100.0	(33)	100.0	100.0	(47)	100.0	(45)	100.0	(41)	100.0	(38)	100.0	(33)	100.0	100.0
Subtotal 90-100%												(30)	71.4	(27)	61.4	(25)	61.0	(25)	78.1	(28)	84.8	86.4	(44)	93.6	(41)	91.1	(37)	90.2	(38)	100.0	(31)	93.9	96.1
Level 20																																	
100%																							(13)	27.7	(10)	22.2	(4)	9.8	(15)	39.5	(14)	42.4	47.4
90-99%																							(28)	59.6	(29)	64.4	(32)	78.0	(23)	60.5	(17)	51.5	47.1
80-89%																							(3)	6.4	(2)	4.4	(3)	7.3			(2)	6.1	2.4
51-79%																							(3)	6.4	(2)	4.4	(1)	2.4					0.9
50% or below																									(2)	4.4	(1)	2.4					2.2
Total																							(47)	100.0	(45)	100.0	(41)	100.0	(38)	100.0	(33)	100.0	100.0
Subtotal 90-100%																							(41)	87.2	(39)	86.7	(36)	87.8	(38)	100.0	(31)	93.9	94.5

	2004	2005	2006	2007	2008	2004	2005	2006	2007	2008	2004	2005	2006	2007	2008
No. of students DNC ¹ :	7	6	8	6	1	0	4	0	1	1	1	3	1	1	2
No. of students at risk ² :	8	10	10	6	1	0	4	0	1	1	3	4	4	0	2

Notes:

¹ Students can be DNC (deemed not capable) only if they meet one of the conditions (insufficient English, receiving D&I funding, insufficient attendance at the school or referred from Reading Recovery) AND read below the minimum standard.

² The number of students at risk is the number of students reading at less than 90% accuracy at Level 1 for Prep, Level 5 for Year 1 or Level 15 for Year 2.

Assessment of Reading: Prep to Year 2

School no: 5074

School name: Lalor West Primary School

Explanation: Students' ability to read unsighted text is assessed at the end of each year.

Source of data: Data transmitted from school to DEECD via an online web-form.

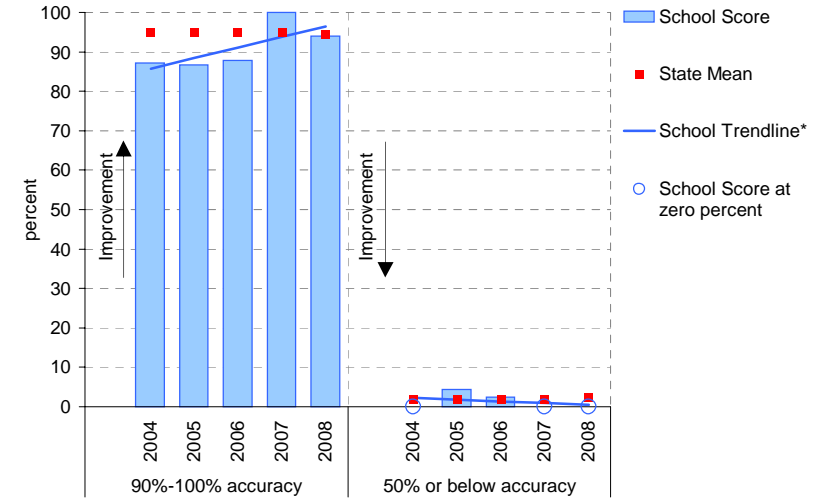
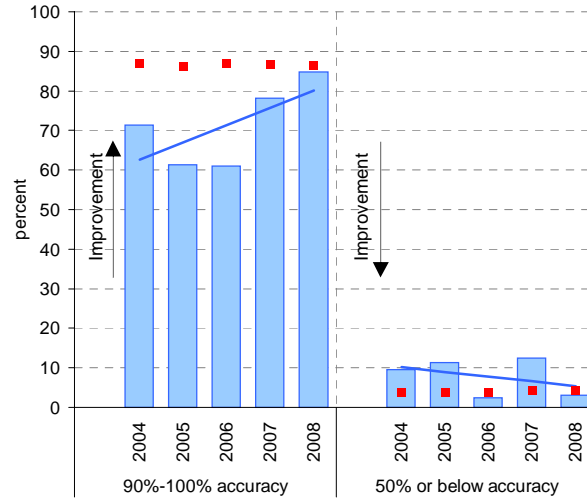
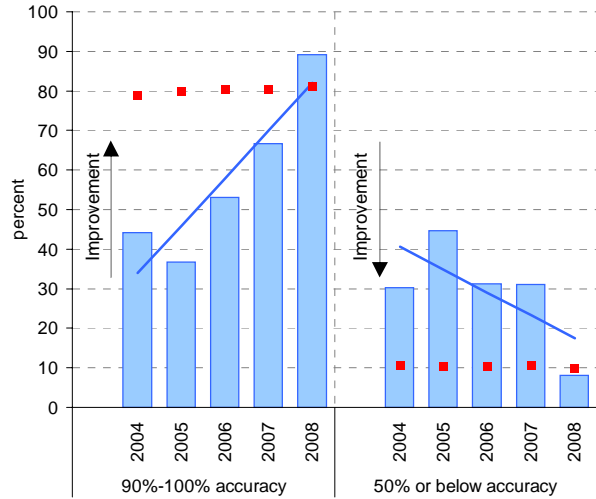
Notes: * The school trendline is being trialled. It is only plotted when there is data for each calendar year.

^ This data is highly skewed, with a lot of schools obtaining the best possible result, particularly in Year 2. The maximum achievable percentile is therefore significantly less than 100.

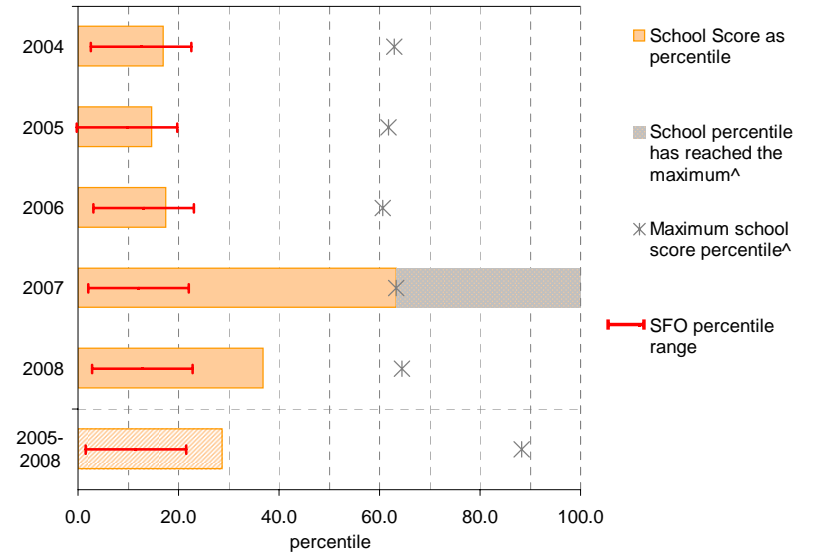
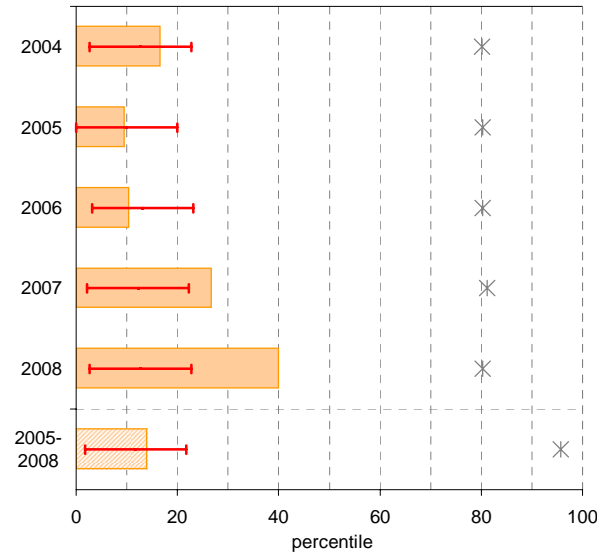
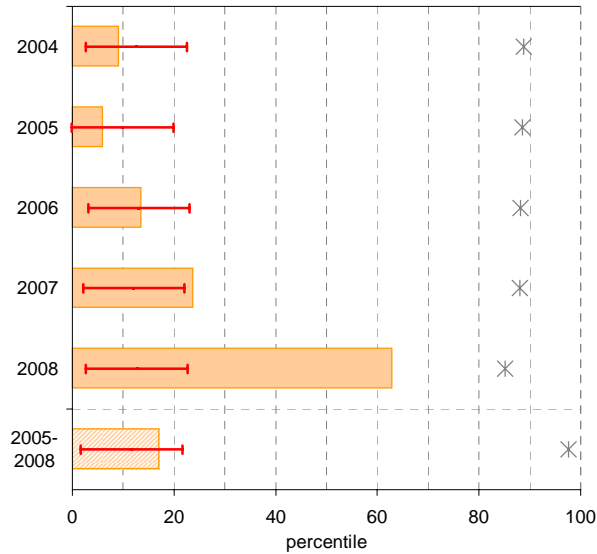
Year level: Prep
Text level: Level 5

Year level: Year 1
Text level: Level 15

Year level: Year 2
Text level: Level 20



90%-100% accuracy as percentile against SFO percentile range



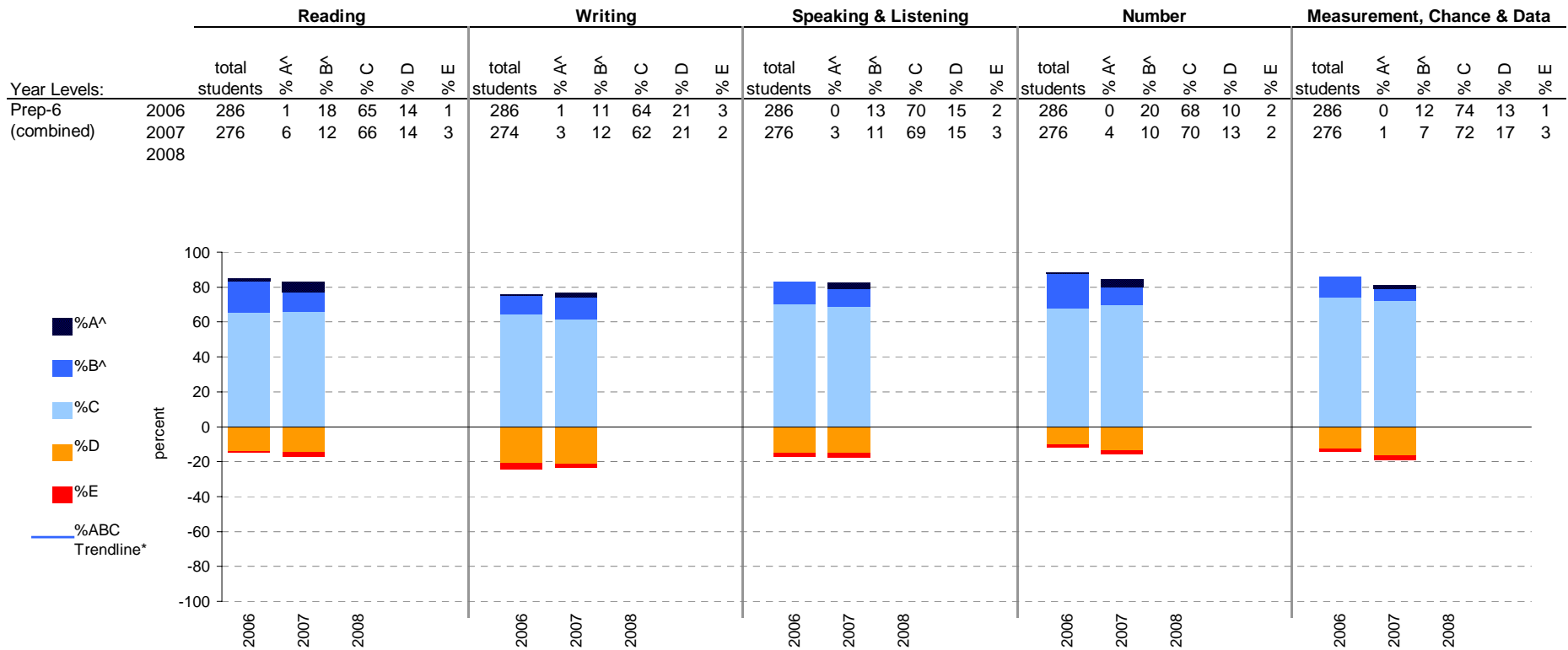
Teacher Judgments against the VELS - Year levels Prep-6 combined

School no: 5074

School name: Lalor West Primary School

Source of data: Data retrieved electronically from CASES21.

Explanation: Teacher judgments of student achievement against the VELS.



Notes: * The school trendline is only plotted when there is data for each calendar year.

^ The cutoff between grades A and B changed in 2007. Further information is available on the following website:
<http://www.education.vic.gov.au/studentlearning/studentreports/schools/whatsnew.htm>.

Teacher Judgments against the VELS - English (primary)

School no: 5074

School name: Lalor West Primary School

Source of data: Data retrieved electronically from CASES21.

Explanation: Teacher judgments of student achievement against the VELS.

Notes: * The school trendline is only plotted when there is data for each calendar year.

** In 2006, approx. 850 schools assessed their students against the 0.25 VELS scale. 2006 benchmarks are therefore based on a subset of schools.

^ The cutoff between grades A and B changed in 2007. Further information is available on the following website: <http://www.education.vic.gov.au/studentlearning/studentreports/schools/whatsnew.htm>.

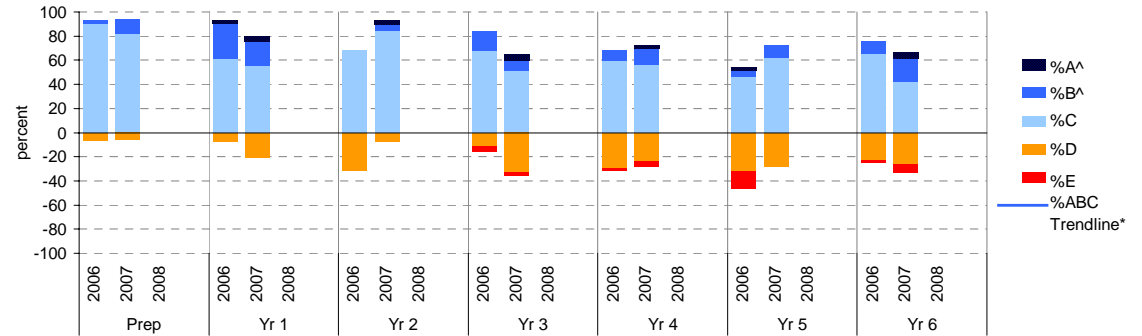
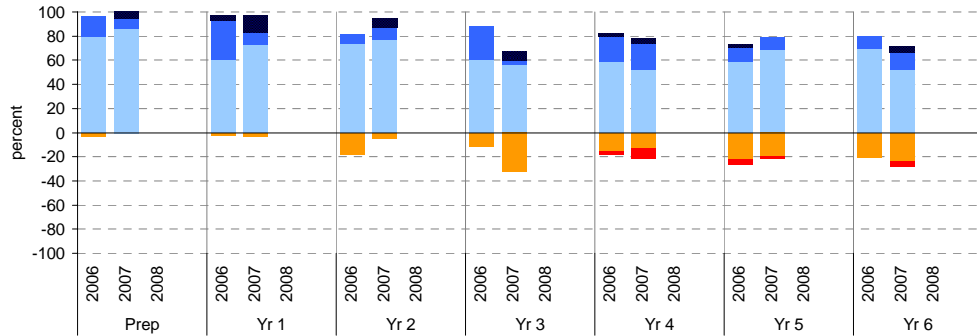
^^ 2008 benchmarks and percentiles will be calculated in August, when data from all schools has been submitted.

Reading

	total students	% of students by grade					Mean Score			total students	% of students by grade					Mean Score			
		A^	B^	C	D	E	School	State**			A^	B^	C	D	E	School	State**		
Prep	2006	30	0	17	80	3	0	0.85	1.01	Yr 4	2006	44	2	20	59	16	2	2.94	2.96
	2007	36	6	8	86	0	0	0.85	1.01		2007	46	4	22	52	13	9	2.88	2.97
	2008										2008								
Yr 1	2006	41	5	32	61	2	0	1.60	1.57	Yr 5	2006	41	2	12	59	22	5	3.30	3.44
	2007	29	14	10	72	3	0	1.50	1.57		2007	47	0	11	68	19	2	3.30	3.45
	2008										2008								
Yr 2	2006	38	0	8	74	18	0	1.85	2.04	Yr 6	2006	49	0	10	69	20	0	3.83	3.94
	2007	39	8	10	77	5	0	1.95	2.06		2007	42	5	14	52	24	5	3.80	3.95
	2008										2008								
Yr 3	2006	43	0	28	60	12	0	2.47	2.49										
	2007	37	8	3	57	32	0	2.30	2.50										
	2008																		

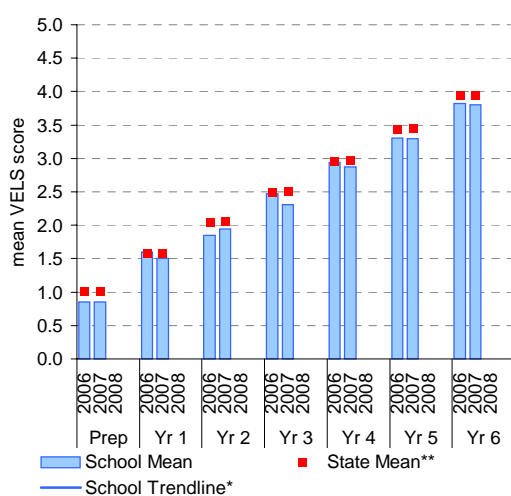
Writing

	total students	% of students by grade					Mean Score			total students	% of students by grade					Mean Score			
		A^	B^	C	D	E	School	State**			A^	B^	C	D	E	School	State**		
Prep	2006	30	0	3	90	7	0	0.82	0.97	Yr 4	2006	44	0	9	59	30	2	2.77	2.89
	2007	34	0	12	82	6	0	0.79	0.97		2007	46	2	13	57	24	4	2.79	2.91
	2008										2008								
Yr 1	2006	41	2	29	61	7	0	1.53	1.47	Yr 5	2006	41	2	5	46	32	15	3.15	3.38
	2007	29	3	21	55	21	0	1.41	1.49		2007	47	0	11	62	28	0	3.28	3.39
	2008										2008								
Yr 2	2006	38	0	0	68	32	0	1.74	1.95	Yr 6	2006	49	0	10	65	22	2	3.79	3.88
	2007	39	3	5	85	8	0	1.86	1.96		2007	42	5	19	43	26	7	3.78	3.89
	2008										2008								
Yr 3	2006	43	0	16	67	12	5	2.40	2.42										
	2007	37	5	8	51	32	3	2.26	2.43										
	2008																		

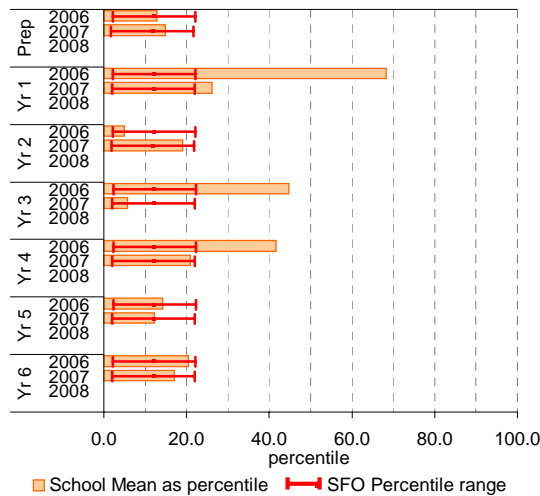


Reading

School Mean against State Mean^^

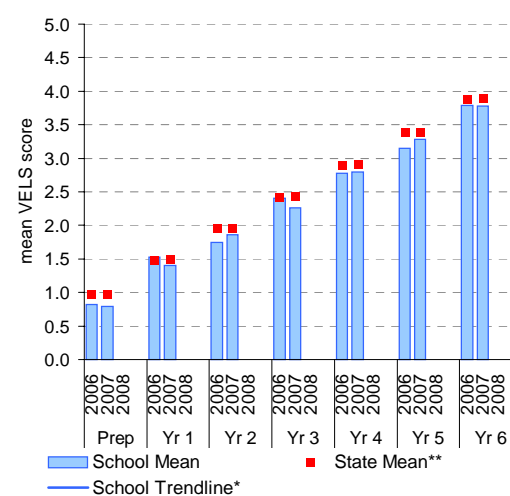


School Mean as percentile against SFO percentile range^^

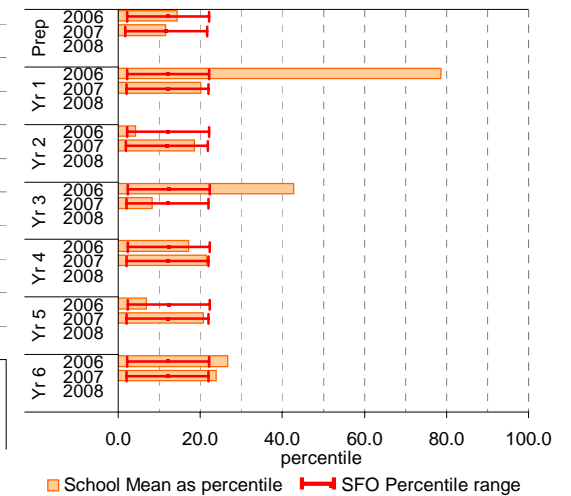


Writing

School Mean against State Mean^^



School Mean as percentile against SFO percentile range^^



Teacher Judgments against the VELS - English (primary)

School no: 5074

School name: Lalor West Primary School

Source of data: Data retrieved electronically from CASES21.

Explanation: Teacher judgments of student achievement against the VELS.

Notes: * The school trendline is only plotted when there is data for each calendar year.

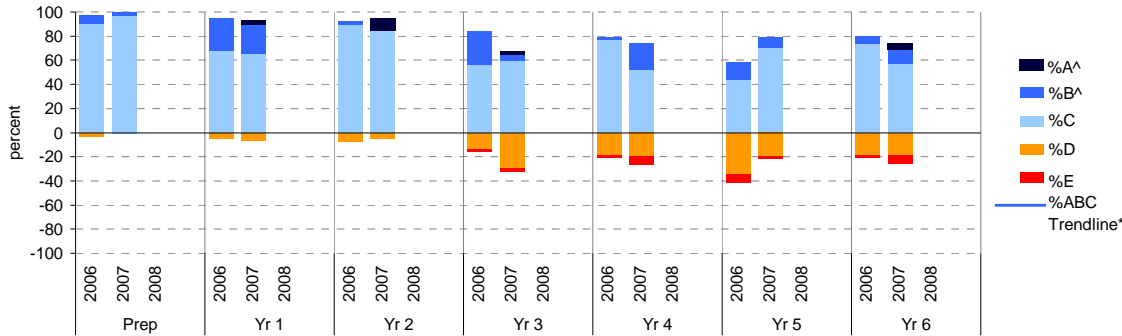
** In 2006, approx. 850 schools assessed their students against the 0.25 VELS scale. 2006 benchmarks are therefore based on a subset of schools.

^ The cutoff between grades A and B changed in 2007. Further information is available on the following website: <http://www.education.vic.gov.au/studentlearning/studentreports/schools/whatsnew.htm>.

^^ 2008 benchmarks and percentiles will be calculated in August, when data from all schools has been submitted.

Speaking and Listening

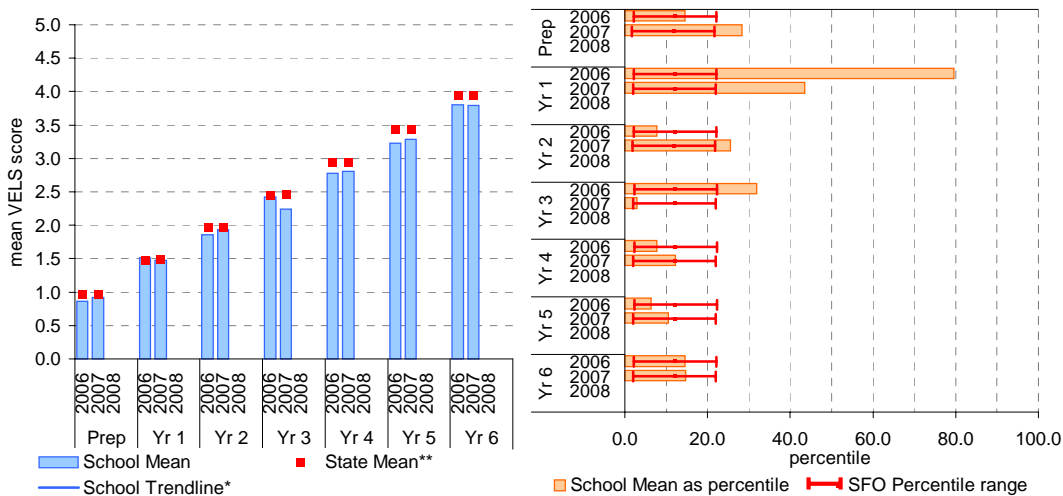
	total students	% of students by grade					Mean Score		total students	% of students by grade	Mean Score								
		A^	B^	C	D	E	School	State**			A^	B^	C	D	E	School	State**		
Prep	2006	30	0	7	90	3	0	0.87	0.97	Yr 4	2006	44	0	2	77	18	2	2.78	2.94
	2007	36	0	3	97	0	0	0.92	0.97		2007	46	0	22	52	20	7	2.81	2.94
	2008										2008								
Yr 1	2006	41	0	27	68	5	0	1.51	1.48	Yr 5	2006	41	0	15	44	34	7	3.23	3.43
	2007	29	3	24	66	7	0	1.47	1.48		2007	47	0	9	70	19	2	3.28	3.43
	2008										2008								
Yr 2	2006	38	0	3	89	8	0	1.86	1.98	Yr 6	2006	49	0	6	73	18	2	3.81	3.93
	2007	39	10	0	85	5	0	1.94	1.98		2007	42	5	12	57	19	7	3.80	3.94
	2008										2008								
Yr 3	2006	43	0	28	56	14	2	2.42	2.45										
	2007	37	3	5	59	30	3	2.24	2.46										
	2008																		



Speaking and Listening

School Mean against State Mean^^

School Mean as percentile against SFO percentile range^^



Teacher Judgments against the VELS - Mathematics (primary)

School no: 5074

School name: Lalor West Primary School

Source of data: Data retrieved electronically from CASES21.

Explanation: Teacher judgments of student achievement against the VELS.

Notes: * The school trendline is only plotted when there is data for each calendar year.

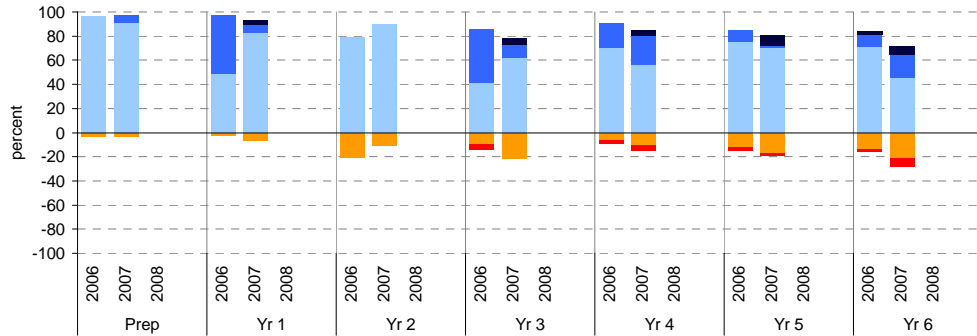
** In 2006, approx. 850 schools assessed their students against the 0.25 VELS scale. 2006 benchmarks are therefore based on a subset of schools.

^ The cutoff between grades A and B changed in 2007. Further information is available on the following website: <http://www.education.vic.gov.au/studentlearning/studentreports/schools/whatsnew.htm>.

^^ 2008 benchmarks and percentiles will be calculated in August, when data from all schools has been submitted.

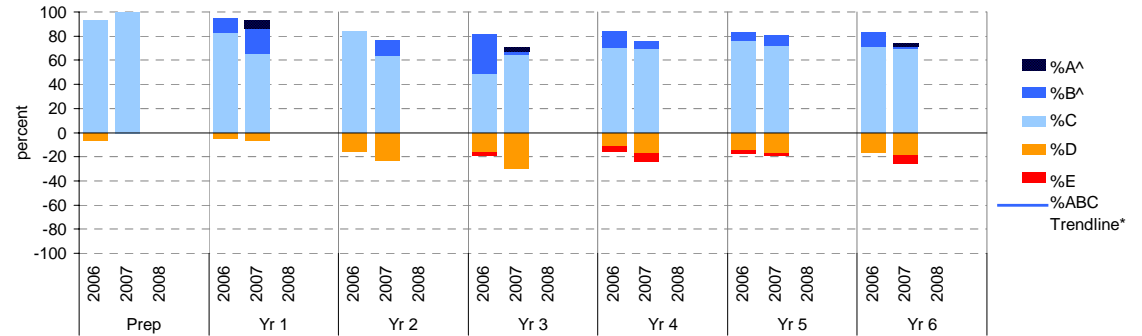
Number

	total students	% of students by grade					Mean Score			total students	% of students by grade					Mean Score			
		A^	B^	C	D	E	School	State**			A^	B^	C	D	E	School	State**		
Prep	2006	30	0	0	97	3	0	0.90	1.00	Yr 4	2006	44	0	20	70	7	2	2.91	2.95
	2007	36	0	6	92	3	0	0.83	1.00		2007	46	4	24	57	11	4	2.90	2.96
	2008										2008								
Yr 1	2006	41	0	49	49	2	0	1.56	1.51	Yr 5	2006	41	0	10	76	12	2	3.34	3.43
	2007	29	3	7	83	7	0	1.45	1.51		2007	47	9	2	70	17	2	3.34	3.44
	2008										2008								
Yr 2	2006	38	0	0	79	21	0	1.80	1.99	Yr 6	2006	49	2	10	71	14	2	3.86	3.93
	2007	39	0	0	90	10	0	1.86	1.99		2007	42	7	19	45	21	7	3.83	3.95
	2008										2008								
Yr 3	2006	43	0	44	42	9	5	2.51	2.46										
	2007	37	5	11	62	22	0	2.37	2.48										
	2008																		



Measurement, Chance and Data

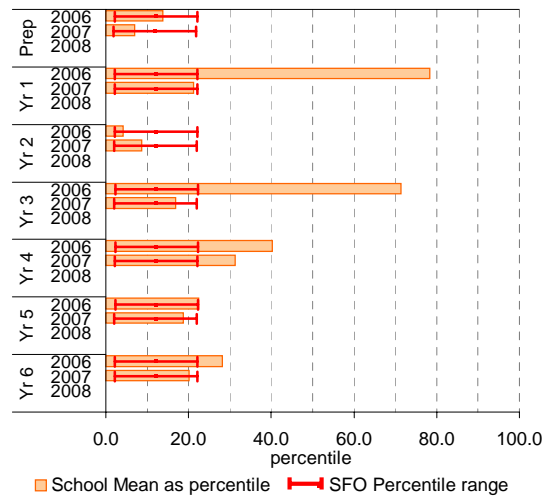
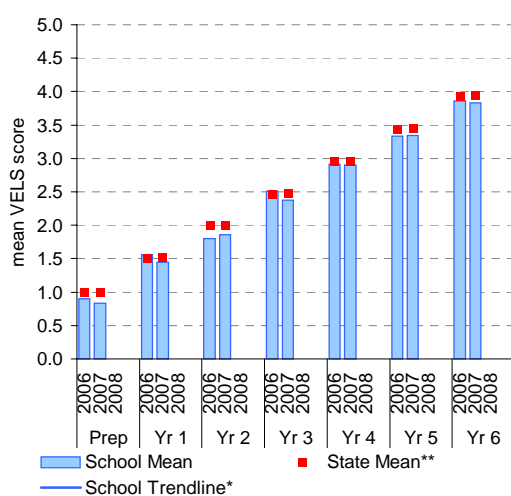
	total students	% of students by grade					Mean Score			total students	% of students by grade					Mean Score			
		A^	B^	C	D	E	School	State**			A^	B^	C	D	E	School	State**		
Prep	2006	30	0	0	93	7	0	0.87	0.97	Yr 4	2006	44	0	14	70	11	5	2.86	2.94
	2007	36	0	0	100	0	0	0.96	0.97		2007	46	0	7	70	17	7	2.79	2.95
	2008										2008								
Yr 1	2006	41	0	12	83	5	0	1.40	1.48	Yr 5	2006	41	0	7	76	15	2	3.32	3.42
	2007	29	7	21	66	7	0	1.50	1.49		2007	47	0	9	72	17	2	3.28	3.43
	2008										2008								
Yr 2	2006	38	0	0	84	16	0	1.77	1.97	Yr 6	2006	49	0	12	71	16	0	3.87	3.92
	2007	39	0	13	64	23	0	1.87	1.98		2007	42	2	2	69	19	7	3.74	3.93
	2008										2008								
Yr 3	2006	43	0	33	49	16	2	2.44	2.45										
	2007	37	3	3	65	30	0	2.28	2.46										
	2008																		



Number

School Mean against State Mean^^

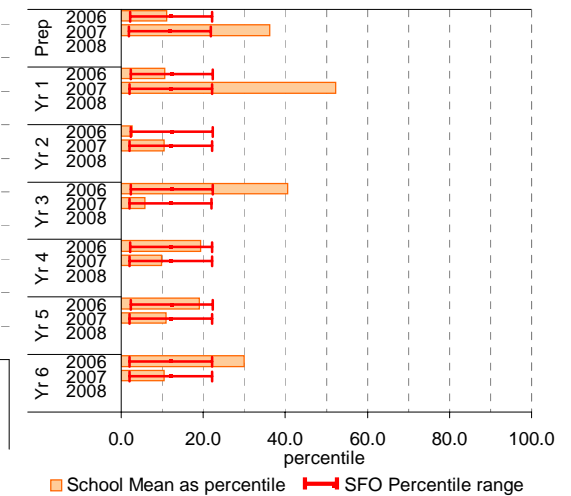
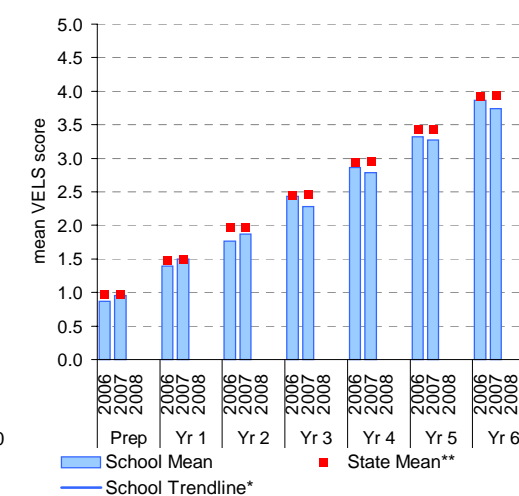
School Mean as percentile against SFO percentile range^^



Measurement, Chance and Data

School Mean against State Mean^^

School Mean as percentile against SFO percentile range^^



NAPLAN Year 3 and 5: Reading

School no: 5074

School name: Lalor West Primary School

Source of data: Victorian Curriculum and Assessment Authority.

Explanation: The National Assessment Program - Literacy and Numeracy (NAPLAN) is conducted each year for students in Years 3, 5, 7 and 9. For more detailed NAPLAN data, refer to the NAPLAN Data Service website at <http://naplands.vcaa.vic.edu.au>. A reference guide for analysing NAPLAN data is available at <http://www.vcaa.vic.edu.au/vcaa/prep10/naplan/schools/analysingnaplandata.pdf>.

Notes: * % student participation = (students who participated in NAPLAN / February enrolments) * 100

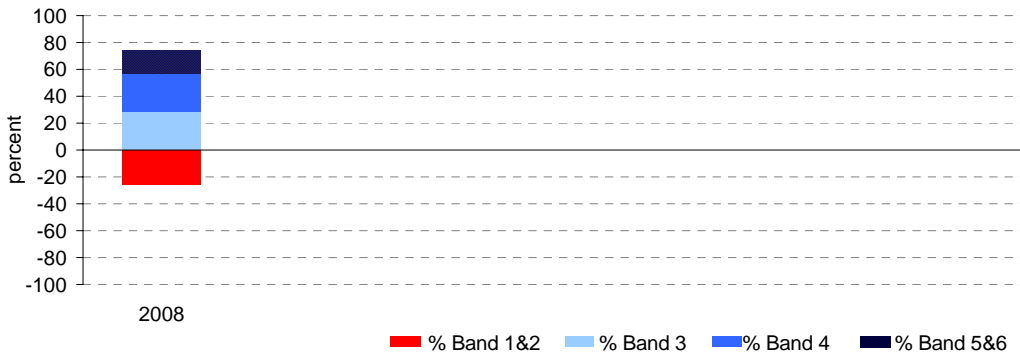
Year 3

	student participation		Percent of students by NAP Band						Mean Scaled Score	
	(n)	(%)*	Band 1	Band 2	Band 3	Band 4	Band 5	Band 6	School	State
2008	35	92	3	23	29	29	11	6	372.6	415.8

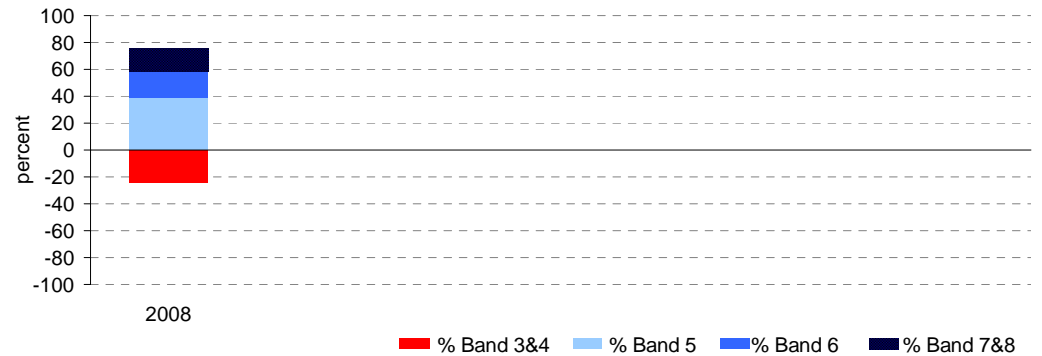
Year 5

	student participation		Percent of students by NAP Band						Mean Scaled Score	
	(n)	(%)*	Band 3	Band 4	Band 5	Band 6	Band 7	Band 8	School	State
2008	41	85	7	17	39	20	12	5	466.0	492.1

Percent of students by NAP Band

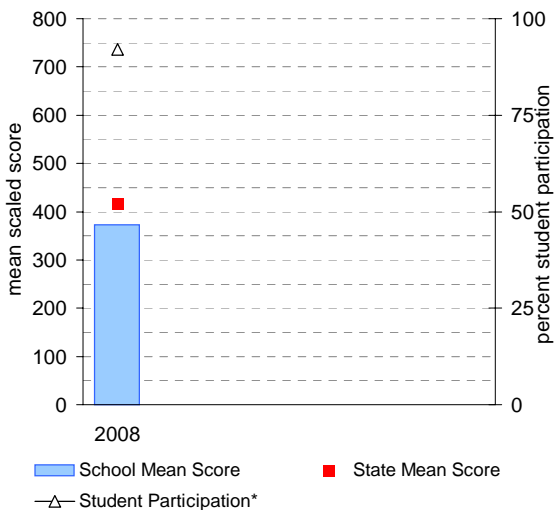


Percent of students by NAP Band

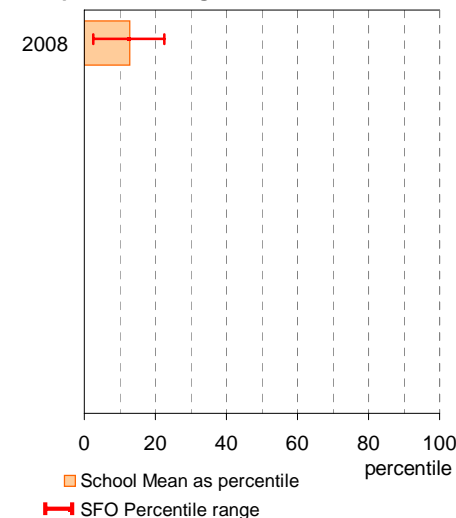


Year 3

School Mean against State Mean, including Participation

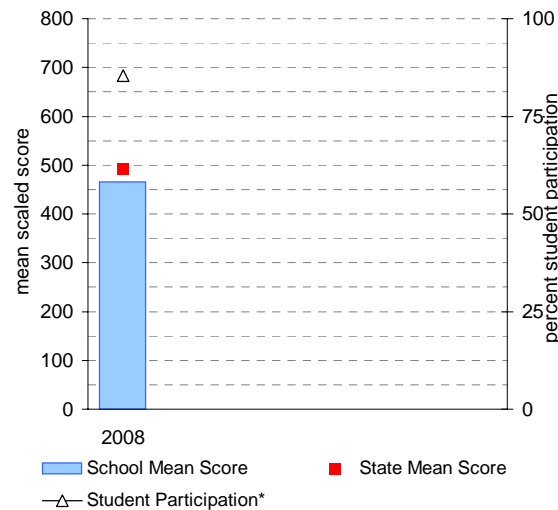


School Mean as percentile against SFO percentile range

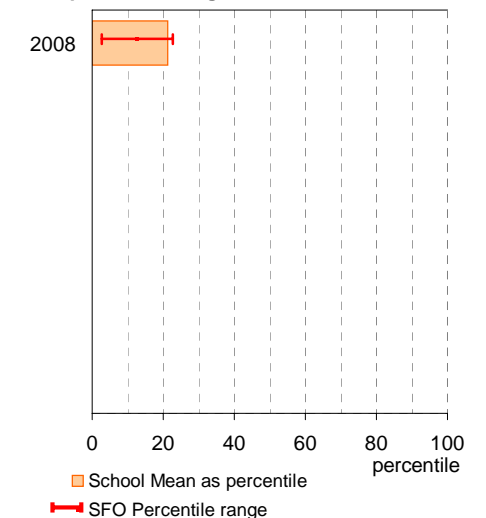


Year 5

School Mean against State Mean, including Participation



School Mean as percentile against SFO percentile range



NAPLAN Year 3 and 5: Writing

School no: 5074

School name: Lalor West Primary School

Source of data: Victorian Curriculum and Assessment Authority.

Explanation: The National Assessment Program - Literacy and Numeracy (NAPLAN) is conducted each year for students in Years 3, 5, 7 and 9. For more detailed NAPLAN data, refer to the NAPLAN Data Service website at <http://naplands.vcaa.vic.edu.au>. A reference guide for analysing NAPLAN data is available at <http://www.vcaa.vic.edu.au/vcaa/prep10/naplan/schools/analysingnaplandata.pdf>.

Notes: * % student participation = (students who participated in NAPLAN / February enrolments) * 100

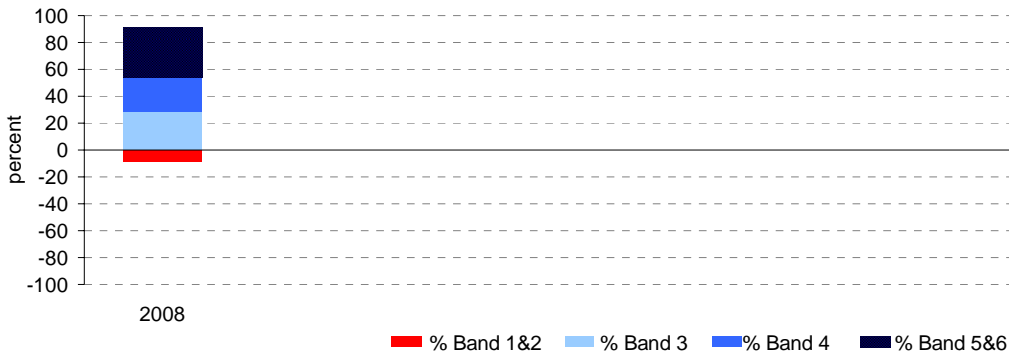
Year 3

	student participation		Percent of students by NAP Band						Mean Scaled Score	
	(n)	(%)*	Band 1	Band 2	Band 3	Band 4	Band 5	Band 6	School	State
2008	35	92	0	9	29	26	31	6	401.7	421.2

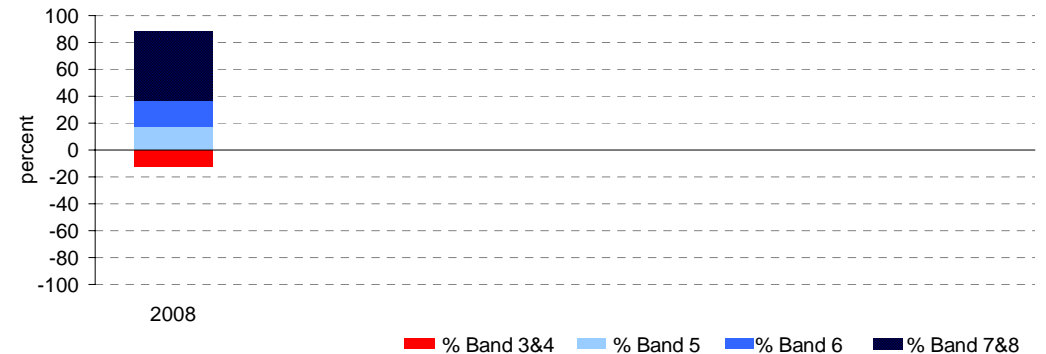
Year 5

	student participation		Percent of students by NAP Band						Mean Scaled Score	
	(n)	(%)*	Band 3	Band 4	Band 5	Band 6	Band 7	Band 8	School	State
2008	41	85	7	5	17	20	29	22	517.2	496.0

Percent of students by NAP Band

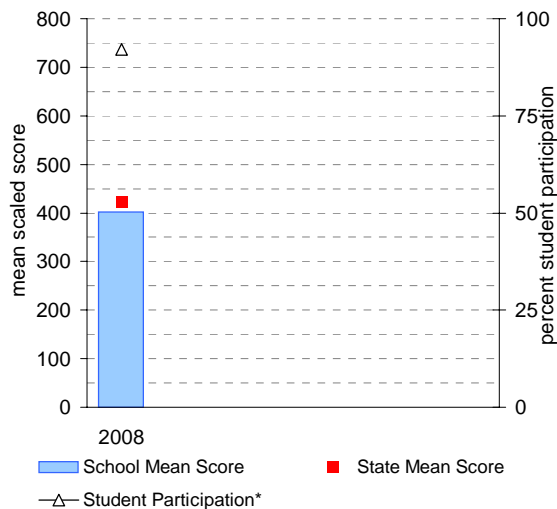


Percent of students by NAP Band

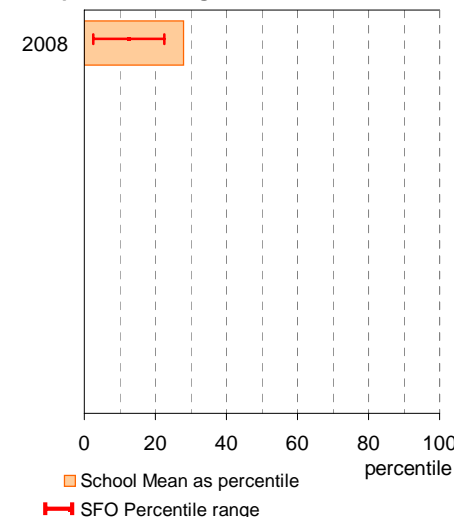


Year 3

School Mean against State Mean, including Participation

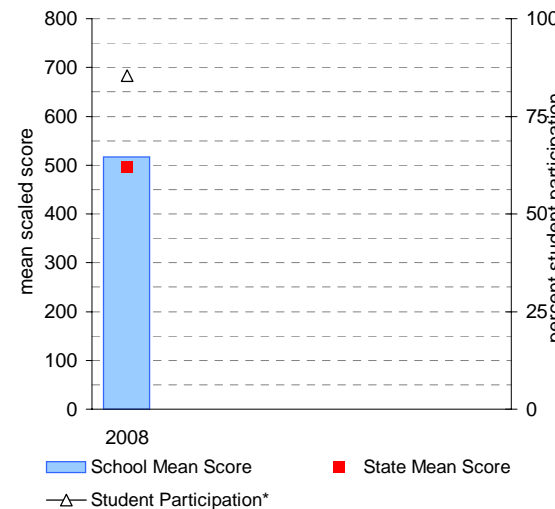


School Mean as percentile against SFO percentile range

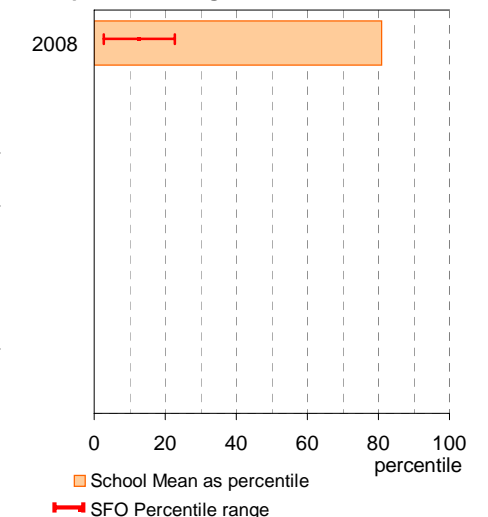


Year 5

School Mean against State Mean, including Participation



School Mean as percentile against SFO percentile range



NAPLAN Year 3 and 5: Numeracy

School no: 5074

School name: Lalor West Primary School

Source of data: Victorian Curriculum and Assessment Authority.

Explanation: The National Assessment Program - Literacy and Numeracy (NAPLAN) is conducted each year for students in Years 3, 5, 7 and 9. For more detailed NAPLAN data, refer to the NAPLAN Data Service website at <http://naplands.vcaa.vic.edu.au>. A reference guide for analysing NAPLAN data is available at <http://www.vcaa.vic.edu.au/vcaa/prep10/naplan/schools/analysingnaplandata.pdf>.

Notes: * % student participation = (students who participated in NAPLAN / February enrolments) * 100

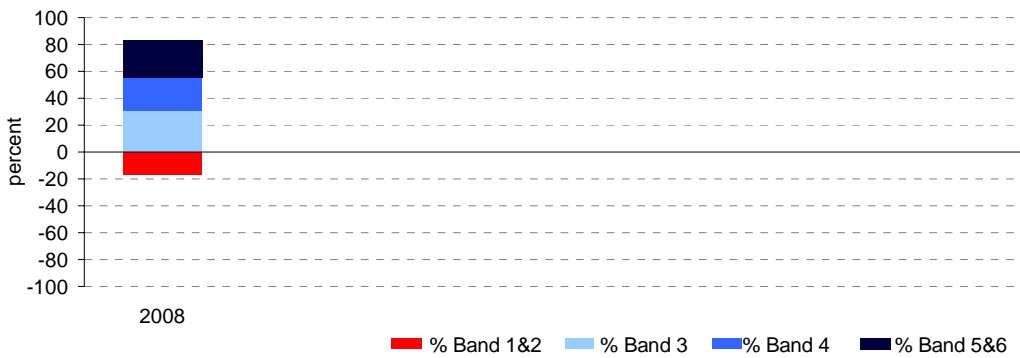
Year 3

	student participation		Percent of students by NAP Band						Mean Scaled Score	
	(n)	(%)*	Band 1	Band 2	Band 3	Band 4	Band 5	Band 6	School	State
2008	36	95	0	17	31	25	19	8	393.2	416.1

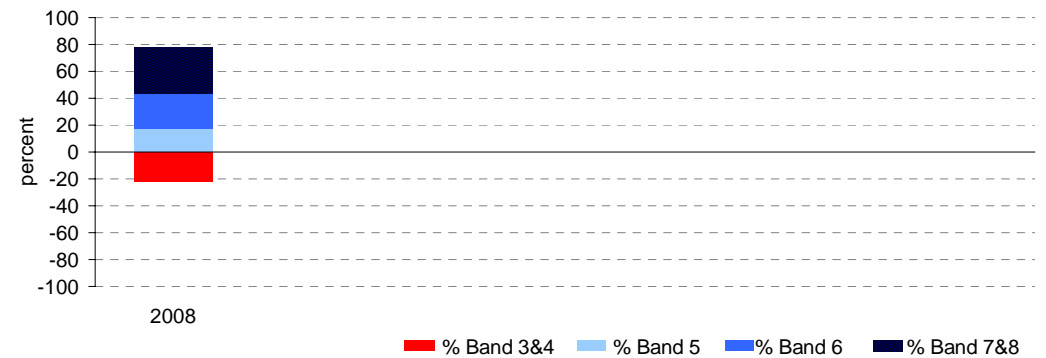
Year 5

	student participation		Percent of students by NAP Band						Mean Scaled Score	
	(n)	(%)*	Band 3	Band 4	Band 5	Band 6	Band 7	Band 8	School	State
2008	41	85	2	20	17	27	17	17	494.3	487.8

Percent of students by NAP Band

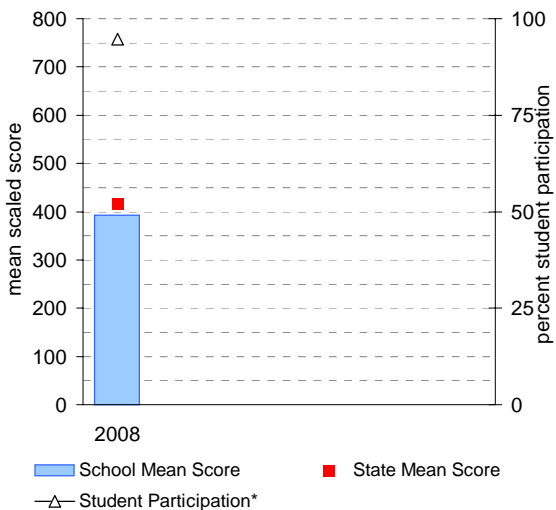


Percent of students by NAP Band

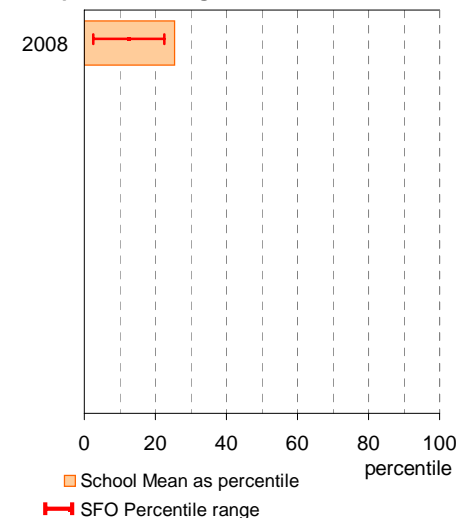


Year 3

School Mean against State Mean, including Participation

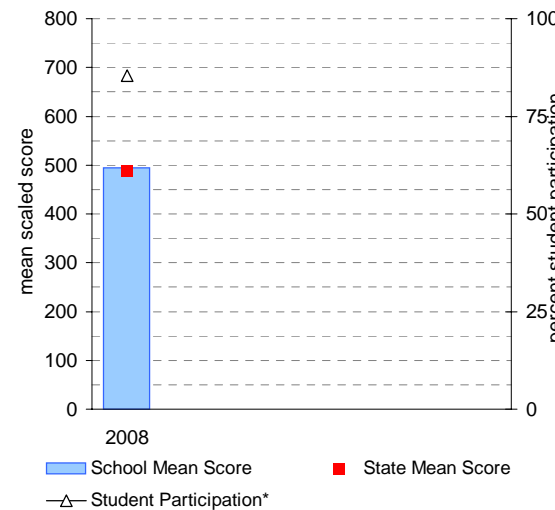


School Mean as percentile against SFO percentile range

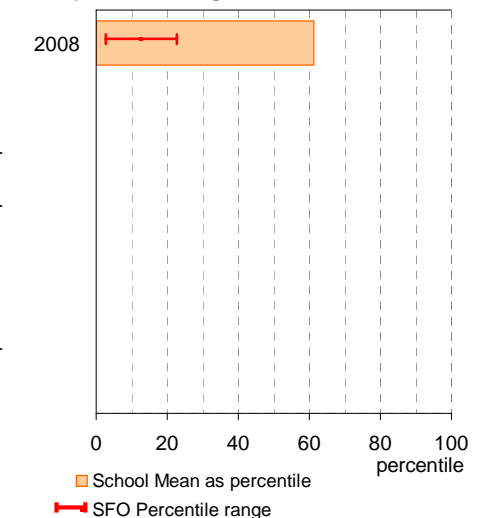


Year 5

School Mean against State Mean, including Participation



School Mean as percentile against SFO percentile range



AIM Year 3 and 5: Reading

School no: 5074

School name: Lalor West Primary School

Source of data: Victorian Curriculum and Assessment Authority.

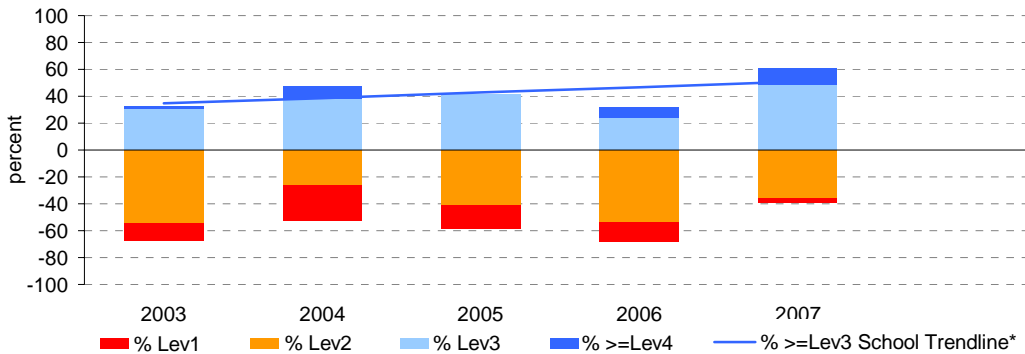
Explanation: The Achievement Improvement Monitor (AIM) was a statewide assessment program conducted each year up until and including 2007 for students in Years 3, 5, 7 and 9. This has now been replaced by NAPLAN. For more detailed AIM data, refer to the AIM Data Service website at <http://aimds.vcaa.vic.edu.au>.

Notes: * The school trendline is only plotted when there is data for each calendar year.
 ** % student participation = (students who participated in AIM / Feb enrolments) * 100

Year 3

	student participation		Percent of students by VEL5 level							Mean CSF / VEL5 Score	
	(n)	(%)**	Lev1	Lev2	Lev3	Lev4	Lev5	Lev6	Lev6E	School	State
2003	46	87	13	54	30	2	0	0	0	1.7	2.3
2004	34	87	26	26	38	9	0	0	0	1.9	2.3
2005	41	87	17	41	41	0	0	0	0	1.8	2.4
2006	41	93	15	54	24	7	0	0	0	1.8	2.3
2007	33	79	3	36	48	12	0	0	0	2.1	2.3

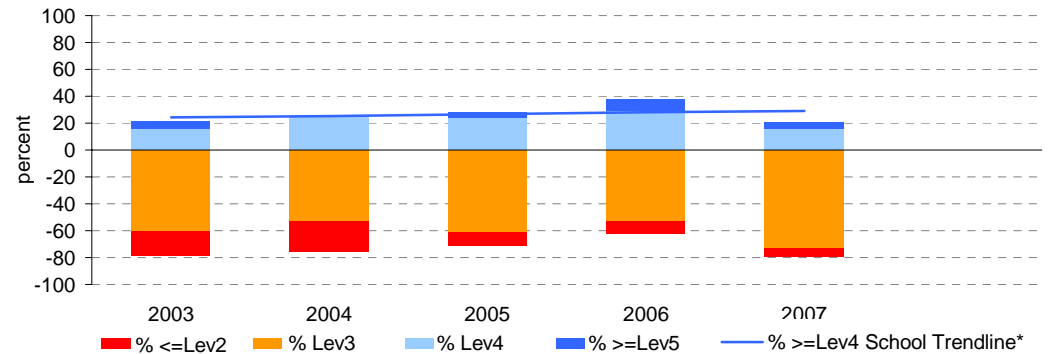
Percent of students by VEL5 level



Year 5

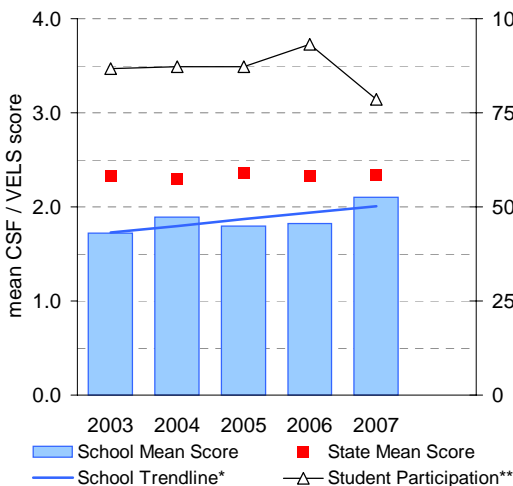
	student participation		Percent of students by VEL5 level						Mean CSF / VEL5 Score		
	(n)	(%)**	Lev1	Lev2	Lev3	Lev4	Lev5	Lev6	Lev6E	School	State
2003	38	93	0	18	61	16	5	0	0	2.7	3.2
2004	36	77	0	22	53	25	0	0	0	2.7	3.2
2005	49	96	0	10	61	24	4	0	0	2.7	3.2
2006	34	87	0	9	53	29	9	0	0	2.8	3.1
2007	44	92	0	7	73	16	5	0	0	2.7	3.2

Percent of students by VEL5 level

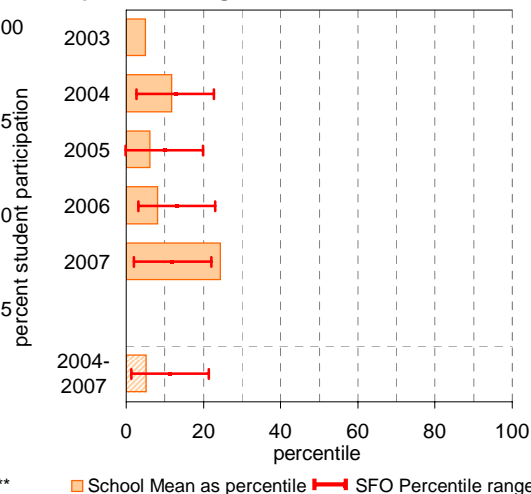


Year 3

School Mean against State Mean, including Participation

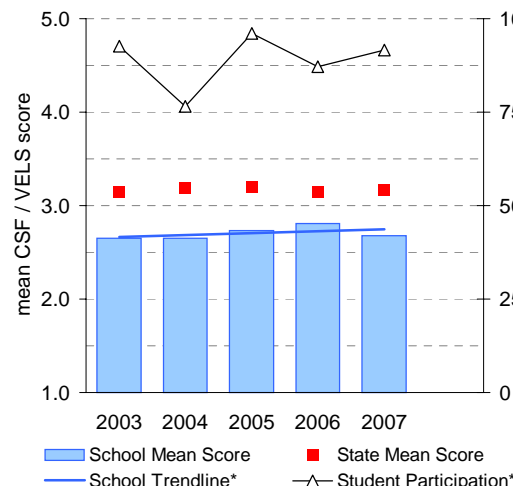


School Mean as percentile against SFO percentile range

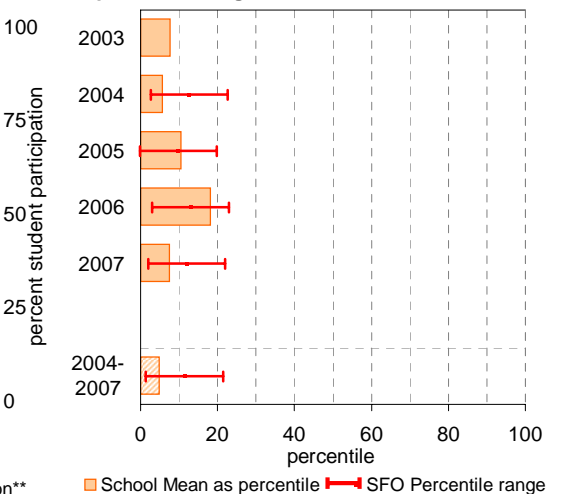


Year 5

School Mean against State Mean, including Participation



School Mean as percentile against SFO percentile range



AIM Year 3 and 5: Number

School no: 5074

School name: Lalor West Primary School

Source of data: Victorian Curriculum and Assessment Authority.

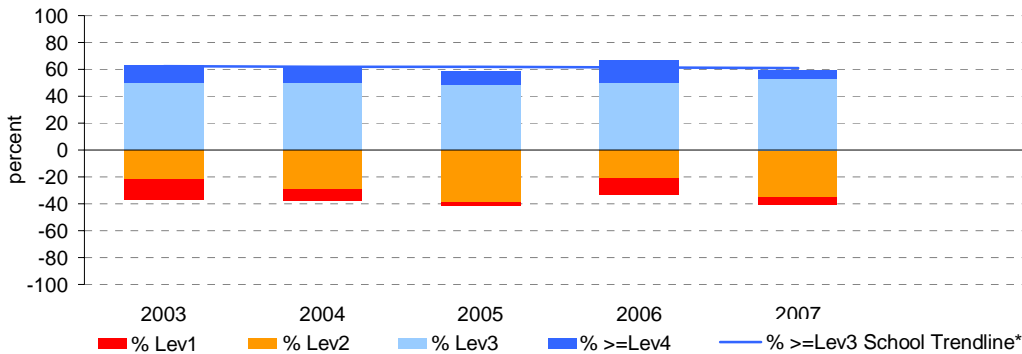
Explanation: The Achievement Improvement Monitor (AIM) was a statewide assessment program conducted each year up until and including 2007 for students in Years 3, 5, 7 and 9. This has now been replaced by NAPLAN. For more detailed AIM data, refer to the AIM Data Service website at <http://aimds.vcaa.vic.edu.au>.

Notes: * The school trendline is only plotted when there is data for each calendar year.
 ** % student participation = (students who participated in AIM / Feb enrolments) * 100

Year 3

	student participation		Percent of students by VEL5 level							Mean CSF / VEL5 Score	
	(n)	(%)**	Lev1	Lev2	Lev3	Lev4	Lev5	Lev6	Lev6E	School	State
2003	46	87	15	22	50	13	0	0	0	2.1	2.4
2004	34	87	9	29	50	12	0	0	0	2.1	2.4
2005	41	87	2	39	49	10	0	0	0	2.0	2.4
2006	42	95	12	21	50	17	0	0	0	2.2	2.4
2007	34	81	6	35	53	6	0	0	0	2.0	2.4

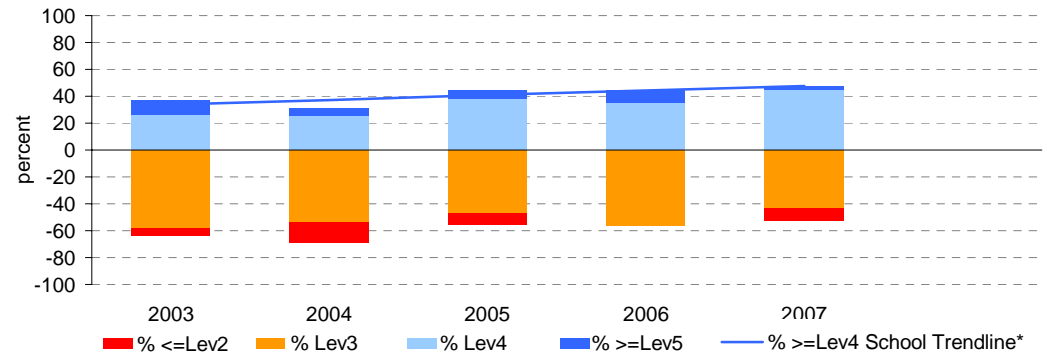
Percent of students by VEL5 level



Year 5

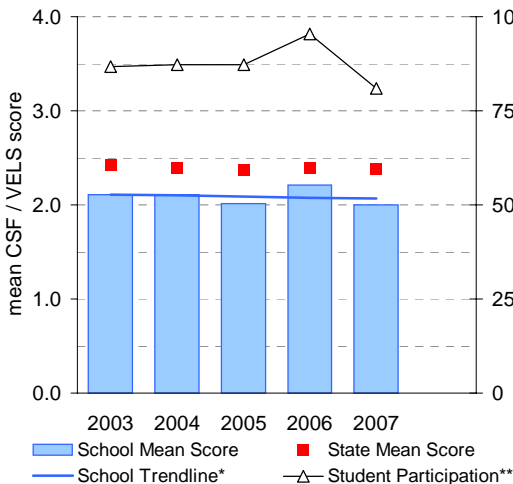
	student participation		Percent of students by VEL5 level						Mean CSF / VEL5 Score		
	(n)	(%)**	Lev1	Lev2	Lev3	Lev4	Lev5	Lev6	Lev6E	School	State
2003	38	93	0	5	58	26	11	0	0	2.9	3.1
2004	39	83	0	15	54	26	5	0	0	2.7	3.2
2005	47	92	0	9	47	38	6	0	0	2.9	3.2
2006	34	87	0	0	56	35	9	0	0	3.2	3.2
2007	44	92	0	9	43	45	2	0	0	2.8	3.2

Percent of students by VEL5 level

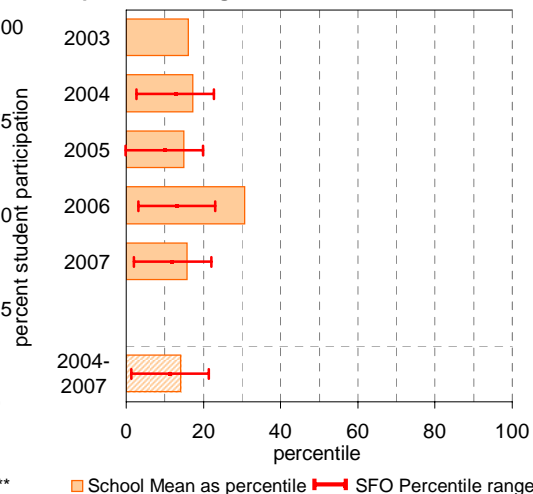


Year 3

School Mean against State Mean, including Participation

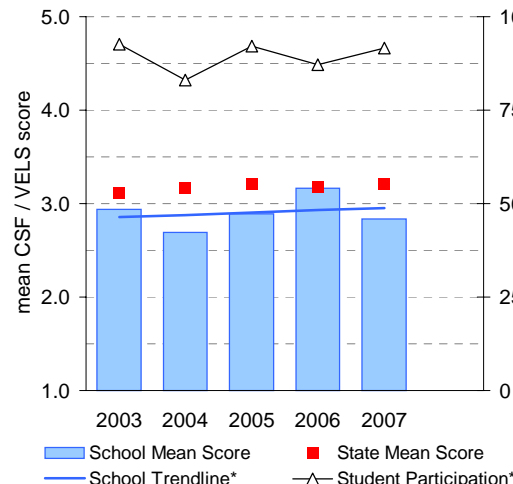


School Mean as percentile against SFO percentile range

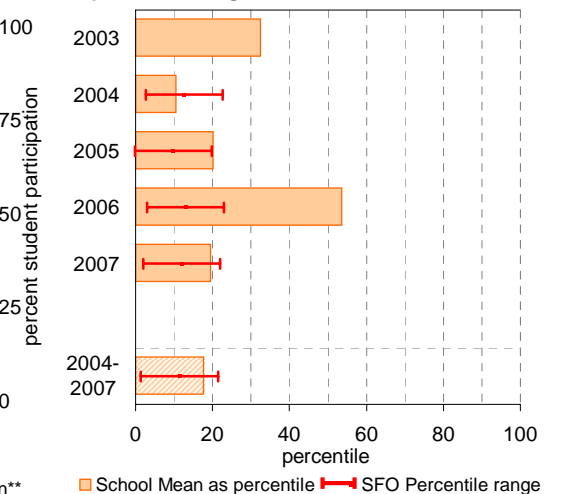


Year 5

School Mean against State Mean, including Participation



School Mean as percentile against SFO percentile range



Teacher Assessment of Student Progress (PSD students)

School no: 5074

School name: Lalor West Primary School

Explanation: Teachers assess their students' progress against the 8 VELS Domains / CSF KLAs using a 6-point scale (students in special schools and those who cannot be assessed against the VELS / CSF).

Source of data: Data transmitted from school to DEECD via an online web-form.

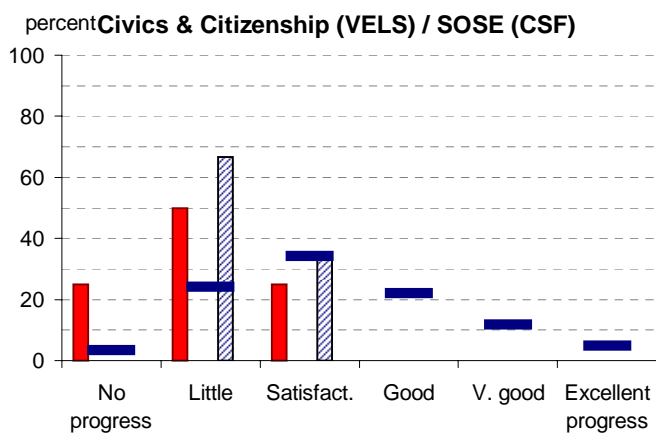
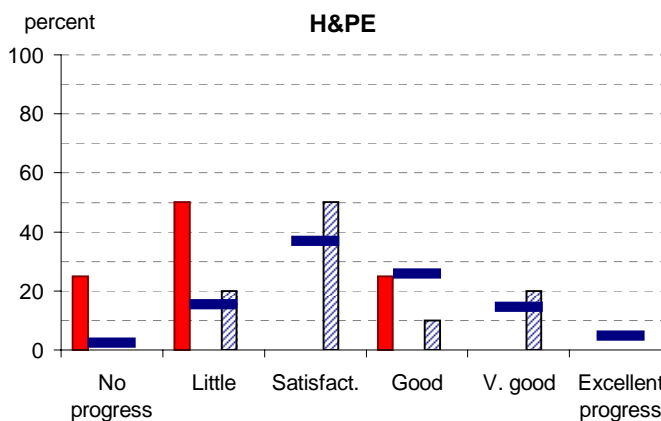
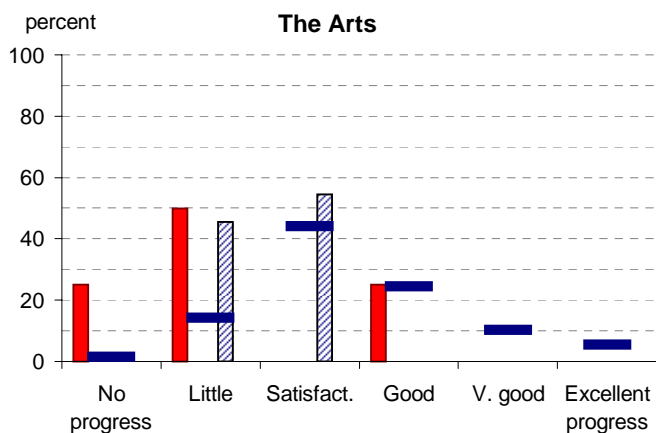
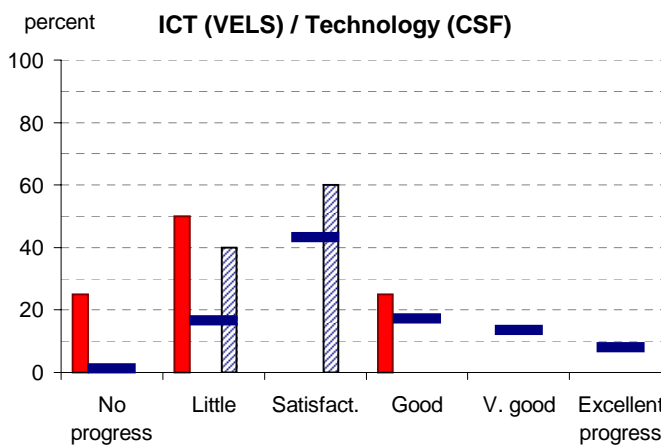
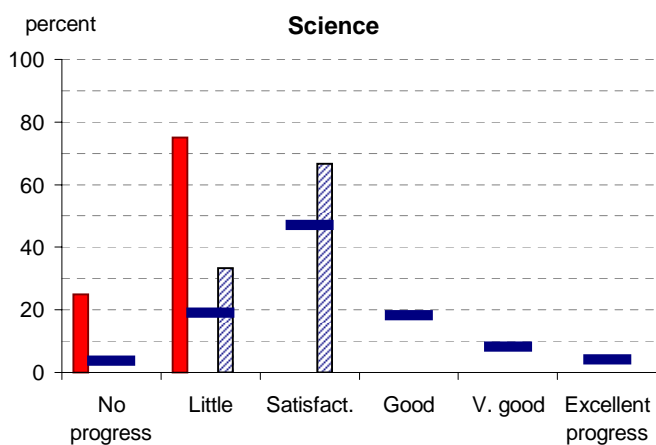
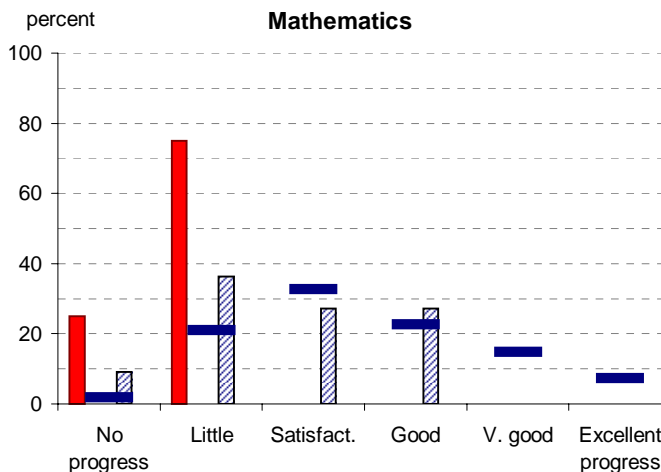
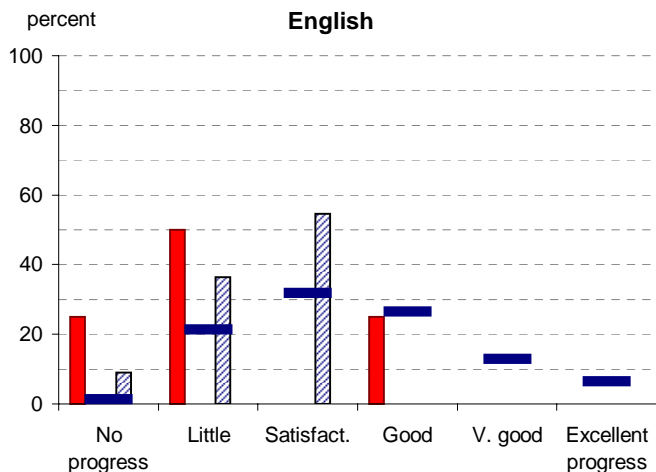
	No progress (%)	Little progress (%)	Satisfactory progress (%)	Good progress (%)	Very good progress (%)	Excellent progress (%)	Total students assessed ¹ (no.)
2004 (by CSF KLA)							
English	25	50		25			4
Mathematics	25	75					4
Science	25	75					4
Technology	25	50		25			4
The Arts	25	50		25			4
H&PE	25	50		25			4
SOSE	25	50	25				4
2005 (by CSF KLA)							
English							
Mathematics							
Science							
Technology							
The Arts							
H&PE							
SOSE							
2006 (by VELS Domain)							
English							
Mathematics							
Science							
ICT							
The Arts							
H&PE							
Civics & Citizenship							
2007 (by VELS Domain)							
English	9	36	55				11
Mathematics	9	36	27	27			11
Science		33	67				6
ICT		40	60				5
The Arts		45	55				11
H&PE		20	50	10	20		10
Civics & Citizenship		67	33				3
2008 (by VELS Domain)							
English							
Mathematics							
Science							
ICT							
The Arts							
H&PE							
Civics & Citizenship							
2007 Primary state benchmarks (by VELS Domain)*							
English	1	21	32	26	13	6	
Mathematics	2	21	33	23	15	7	
Science	4	19	47	18	8	4	
ICT	1	17	43	17	14	8	
The Arts	2	14	44	24	10	5	
H&PE	2	15	37	26	15	5	
Civics & Citizenship	3	24	34	22	12	5	

Notes: ¹ If schools provided percentages only, it is not possible to report the number of students assessed. In these cases, the total percentage (100) will be shown.

* 2008 benchmarks will be calculated in August, when data from all schools has been submitted.

Teacher Assessment of Student Progress (PSD students)

School no: 5074
 School name: Lalor West Primary School



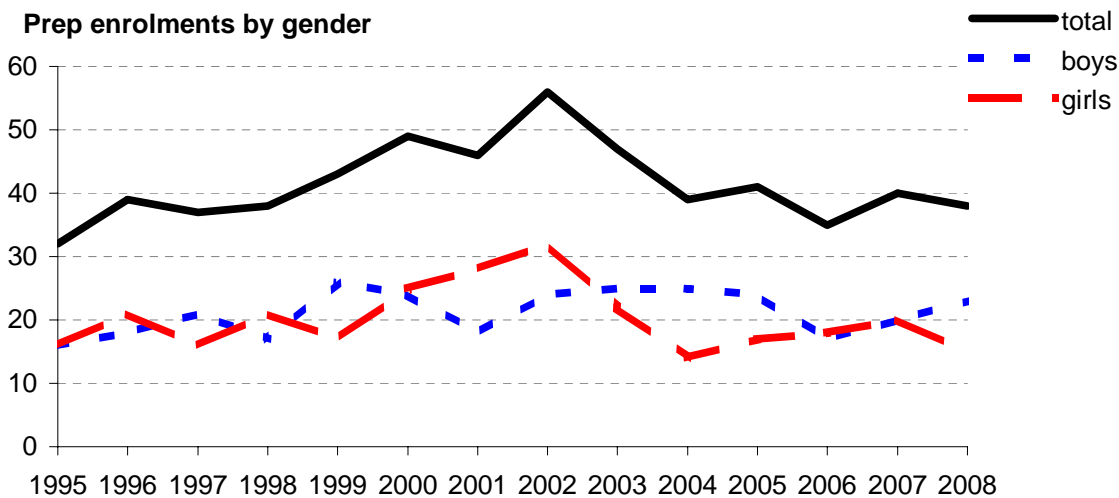
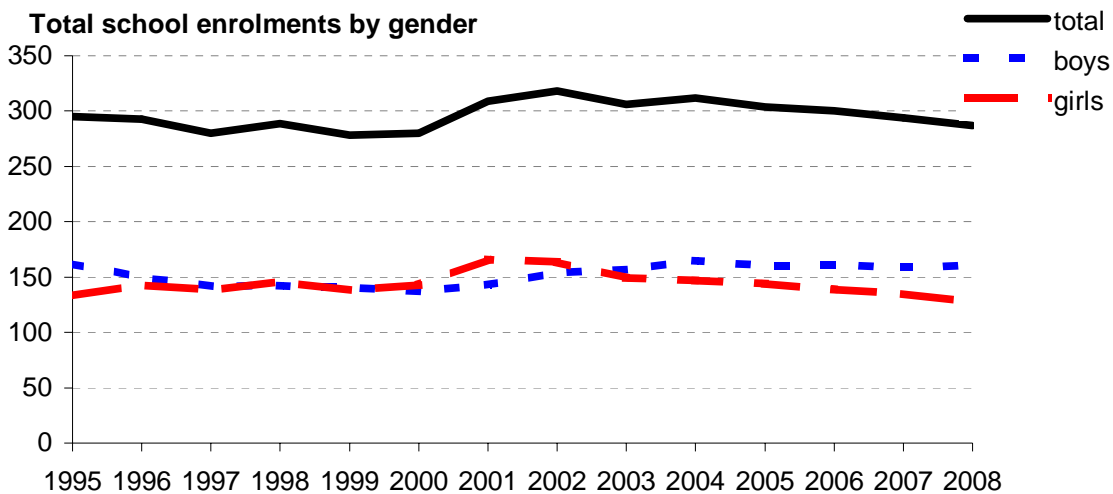
- 2004 (by CSF KLA)
- 2005 (by CSF KLA)
- 2006 (by VELS Domain)
- 2007 (by VELS Domain)
- 2008 (by VELS Domain)
- 2007 Primary state benchmarks (by VELS Domain)*

Notes: * 2008 benchmarks will be calculated in August, when data from all schools has been submitted.

Enrolments

School no: 5074
School name: Lalor West Primary School
Explanation: Enrolments at February census.
Source of data: February census.

Year	Total school enrolment			Prep enrolment			Year 7 enrolments		
	boys	girls	total	boys	girls	total	boys	girls	total
1995	162	133	295	16	16	32			
1996	150	143	293	18	21	39			
1997	142	138	280	21	16	37			
1998	142	146	288	17	21	38			
1999	140	138	278	26	17	43			
2000	137	143	280	24	25	49			
2001	143	166	309	18	28	46			
2002	154	164	318	24	32	56			
2003	157	149	306	25	22	47			
2004	165	147	312	25	14	39			
2005	160	144	304	24	17	41			
2006	161	139	300	17	18	35			
2007	159	135	294	20	20	40			
2008	160	127	287	23	15	38			



Student Absence

School no: 5074

School name: Lalor West Primary School

Source of data: Data retrieved electronically from CASES21.

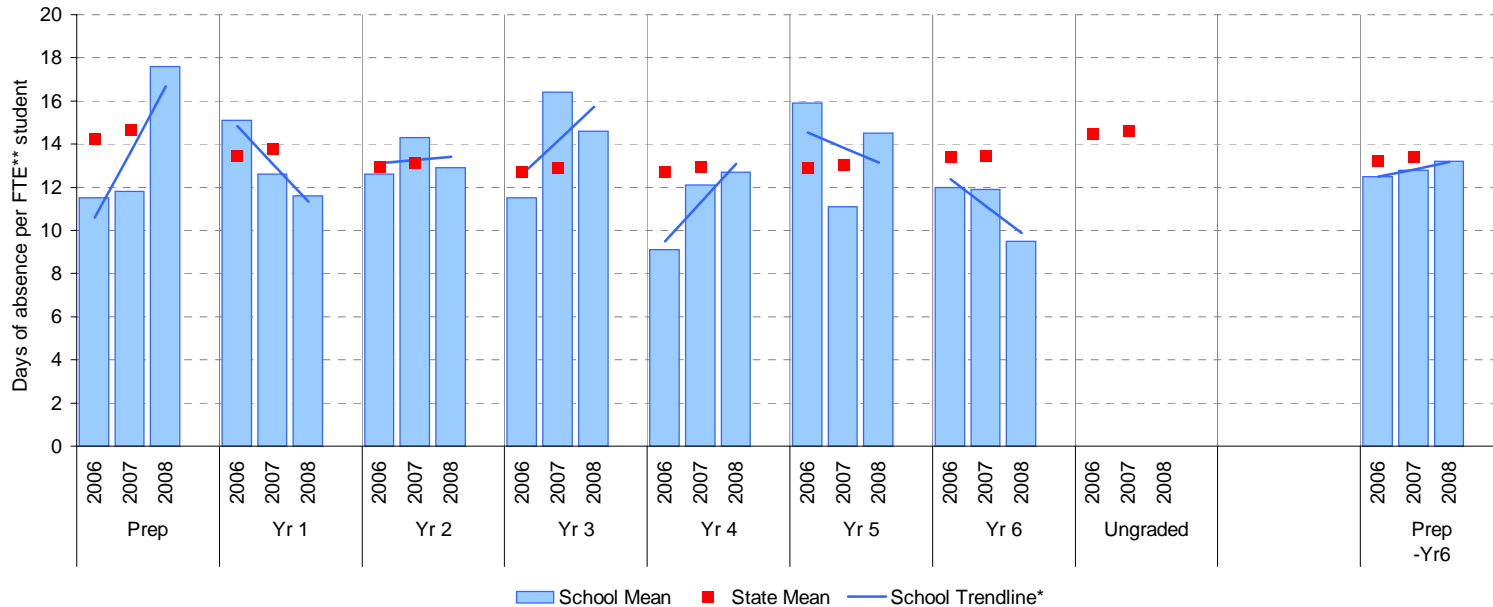
Explanation: The average (mean) number of absent days† per FTE** student.

Note that 20 absent days equates to 1 absent day per fortnight, and 10 absent days to 1 absent day per month.

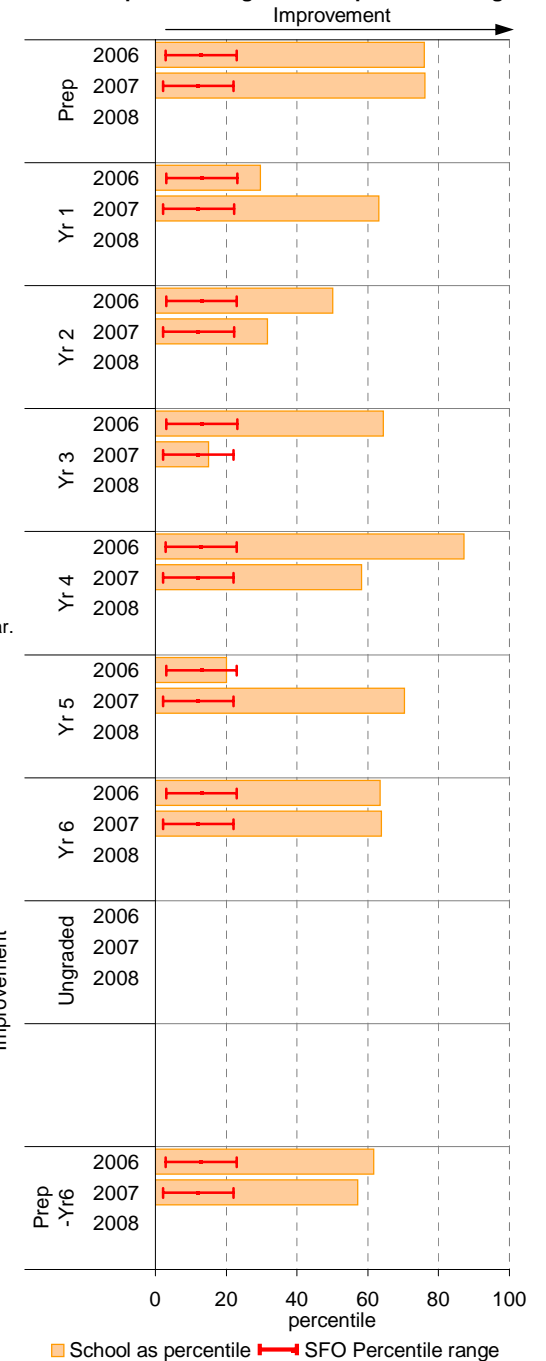
	School						2007 state benchmark^		
	2006		2007		2008		25th ptile	Mean	75th ptile
	Enrolments	Avg absent days / FTE** student	Enrolments	Avg absent days / FTE** student	Enrolments	Avg absent days / FTE** student			
Prep	33.2	11.5	40.4	11.8	37.1	17.6	12.0	14.6	17.7
Yr 1	40.8	15.1	31.6	12.6	36.9	11.6	11.5	13.8	16.1
Yr 2	42.4	12.6	40.1	14.3	30.0	12.9	11.0	13.1	15.1
Yr 3	46.5	11.5	42.9	16.4	38.0	14.6	10.8	12.9	14.9
Yr 4	45.9	9.1	49.5	12.1	45.9	12.7	10.8	12.9	15.0
Yr 5	41.6	15.9	48.5	11.1	47.7	14.5	10.6	13.1	15.0
Yr 6	54.7	12	42.9	11.9	48.7	9.5	11.0	13.4	15.7
Ungraded								14.6	
P-6 mean		12.5		12.8		13.2		13.4	

Notes: † Includes non-curriculum absences only (absence codes 200, 201, 202, 203, 205, 206, 207, 208, 209, 210, 211, 300, 401, 500, 700, 800, 804, 805, 900).
 * The school trendline is only plotted when there is data for each calendar year.
 ** FTE = Full Time Equivalent (including part-time and part-year fractions).
 ^ 2008 benchmarks and percentiles will be calculated in August, when data from all schools has been submitted.

School Mean against State Mean^



School Mean as percentile against SFO percentile range^



Parent Opinion

School no: 5074

School name: Lalor West Primary School

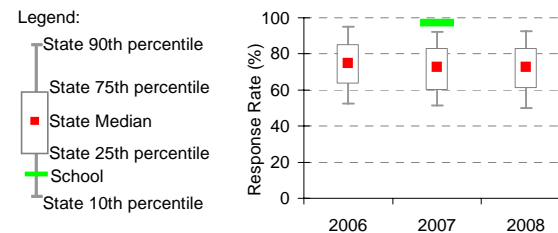
Explanation: A self-completion questionnaire to obtain parents' opinions of the school. Parents rated a number of statements using a scale where 1=strongly disagree & 7=strongly agree. The statements were grouped into the following categories.

Source of data: Data scanned from questionnaires completed by parents.

Variable No. Name	Year	School mean	State Primary median
1 School Improvement	2006	5.88	5.71
	2007	5.98	5.75
	2008	5.77	5.74
2 Approachability	2006	5.98	5.81
	2007	5.89	5.82
	2008	5.95	5.83
3 Teacher Morale	2006	5.99	5.82
	2007	5.92	5.86
	2008	6.02	5.85
4 Parent Input	2006	5.41	5.59
	2007	5.61	5.62
	2008	5.49	5.62
5 Stimulating Learning	2006	5.94	5.81
	2007	5.99	5.84
	2008	6.02	5.84
6 Behaviour Management	2006	5.59	5.51
	2007	5.56	5.54
	2008	5.63	5.55
7 Reporting	2006	5.82	5.45
	2007	5.97	5.51
	2008	5.91	5.56
8 Learning Focus	2006	5.71	5.71
	2007	5.64	5.72
	2008	5.81	5.73
9 Transitions	2006	5.97	5.72
	2007	5.59	5.76
	2008	5.98	5.79
10 Extra Curricula	2006	5.24	5.07
	2007	5.36	5.17
	2008	5.57	5.19
11 Homework	2006	5.57	5.23
	2007	5.38	5.23
	2008	6.05	5.28
12 General Satisfaction	2006	5.92	5.87
	2007	5.94	5.88
	2008	5.83	5.91
13 Student Safety^	2006	5.31	5.13
	2007	5.51	5.12
	2008	5.15	5.20
14 Classroom Behaviour^	2006	4.34	4.15
	2007	4.23	4.18
	2008	3.95	4.20

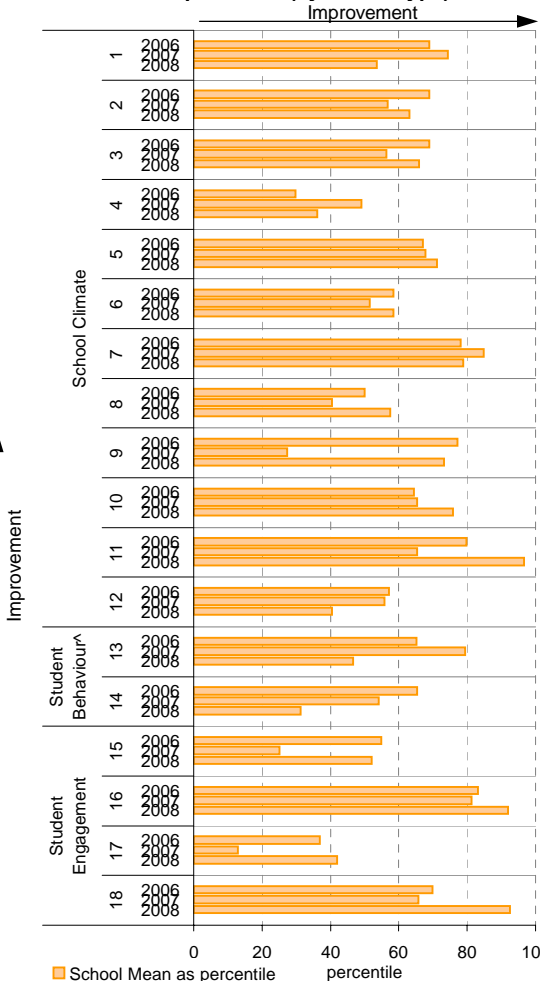
Variable No. Name	Year	School mean	State Primary median
15 Connectedness to Peers	2006	5.86	5.83
	2007	5.66	5.83
	2008	5.86	5.85
16 Student Motivation	2006	6.02	5.66
	2007	6.02	5.69
	2008	6.21	5.72
17 Social Skills	2006	5.69	5.76
	2007	5.49	5.78
	2008	5.76	5.81
18 School Connectedness	2006	5.97	5.83
	2007	5.97	5.85
	2008	6.32	5.86

School response rate** against Primary school distribution

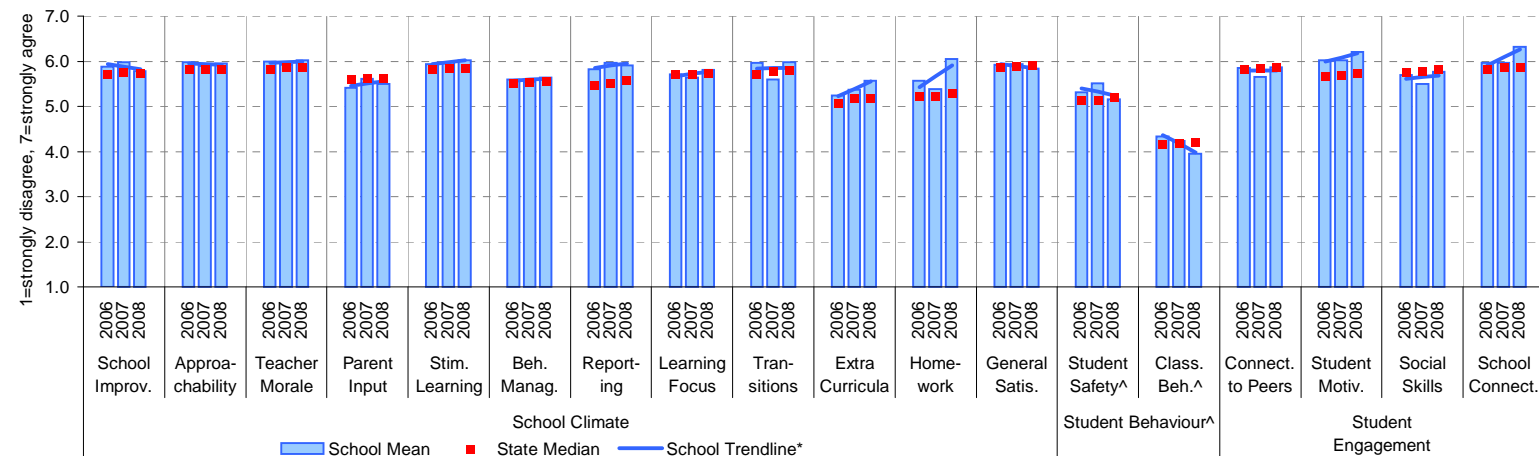


Year	No. of respondents	No. invited	Response Rate
2006	52	45	115.6%
2007	34	35	97.1%
2008	52	45	115.6%

School Mean as percentile (by school type)



School Mean against Primary State Mean



Notes: * The school trendline is plotted when there is data for each calendar year.

^^ Benchmarks available for Primary, Secondary, Pri/Sec, Special and SDS schools.

** If there were 6 or less respondents, table data is not shown for confidentiality reasons. If there were 3 or less respondents, graph data is not shown for confidentiality reasons.

^ Parents' responses to all negatively phrased questions have been reversed for reporting purposes. Across all variables, the higher the score or percentile rank, the more positive parents' perceptions.

Staff Opinion

School no: 5074

School name: Lalor West Primary School

Explanation: A self-completion questionnaire to obtain the staff's opinions of the school. The survey was administered online using the School Organisational Health Questionnaire.

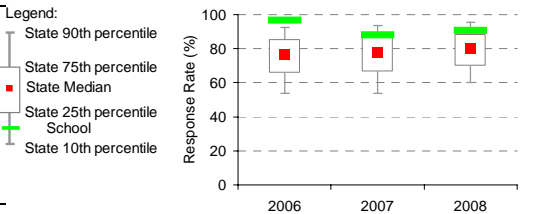
Source of data: Data transmitted from school staff to DEECD via an online survey application.

Variable	No.	Name	Year	School mean	State Primary median
1 Individual Morale			2006	61.0	75.6
			2007	77.5	76.8
			2008	66.6	78.1
2 School Morale			2006	70.7	78.1
			2007	82.4	79.2
			2008	66.9	80.8
3 Supportive Leadership			2006	62.9	80.0
			2007	78.4	80.6
			2008	57.8	82.2
4 Role Clarity			2006	72.4	79.6
			2007	82.5	80.1
			2008	66.4	81.3
5 Professional Interaction			2006	77.1	80.7
			2007	84.5	81.9
			2008	72.2	83.2
6 Participative Decision-Making			2006	56.7	75.1
			2007	73.3	76.3
			2008	60.8	77.4
7 Goal Congruence			2006	76.9	81.7
			2007	81.6	82.6
			2008	73.1	83.7

Variable	No.	Name	Year	School mean	State Primary median
8 Appraisal & Recognition			2006	64.4	71.6
			2007	79.3	73.1
			2008	61.3	75.0
9 Professional Growth			2006	75.7	74.2
			2007	81.6	76.0
			2008	72.9	76.9
10 Curriculum Coordination			2006	76.5	75.0
			2007	79.6	75.6
			2008	72.3	77.9
11 Effective Discipline Policy			2006	69.1	79.9
			2007	64.8	80.9
			2008	60.7	82.0
12 Student Orientation			2006	80.2	86.1
			2007	86.0	86.6
			2008	78.6	87.5
13 Student Motivation			2006	63.3	76.8
			2007	70.3	77.9
			2008	65.9	79.5
14 Student Decision-Making			2006	53.3	69.4
			2007	70.3	71.3
			2008	53.1	72.9

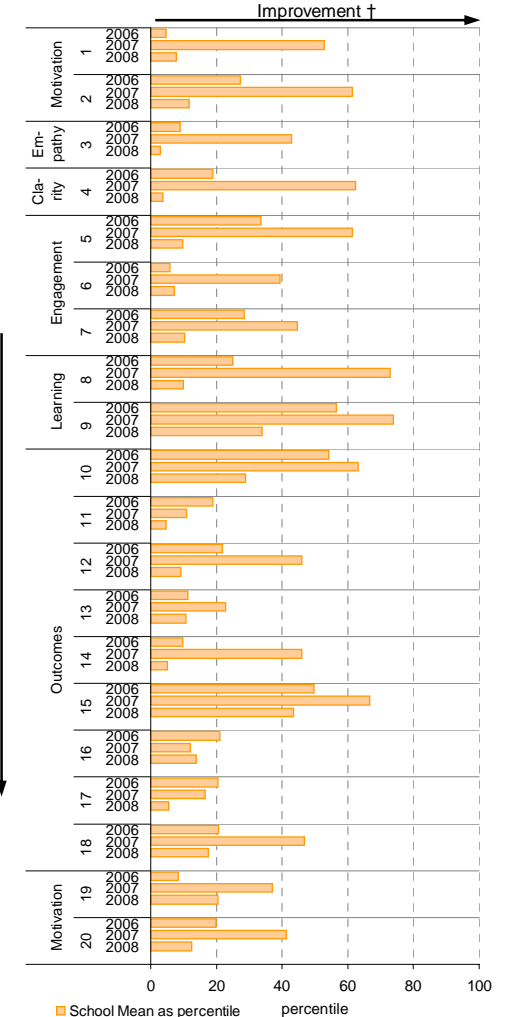
Variable	No.	Name	Year	School mean	State Primary median
15 Learning Environment			2006	81.3	81.3
			2007	85.9	82.5
			2008	83.0	84.1
16 Student Misbehaviour			2006	36.9	21.7
			2007	43.0	21.5
			2008	39.3	20.0
17 Classroom Misbehaviour			2006	20.3	13.8
			2007	20.3	13.3
			2008	25.8	12.6
18 Excessive Work Demands			2006	55.0	42.9
			2007	44.6	43.2
			2008	54.7	41.7
19 Individual Distress			2006	34.8	21.6
			2007	23.5	21.1
			2008	26.8	20.0
20 School Distress			2006	41.4	28.8
			2007	31.7	28.3
			2008	43.1	26.7

School response rate** against Primary school distribution

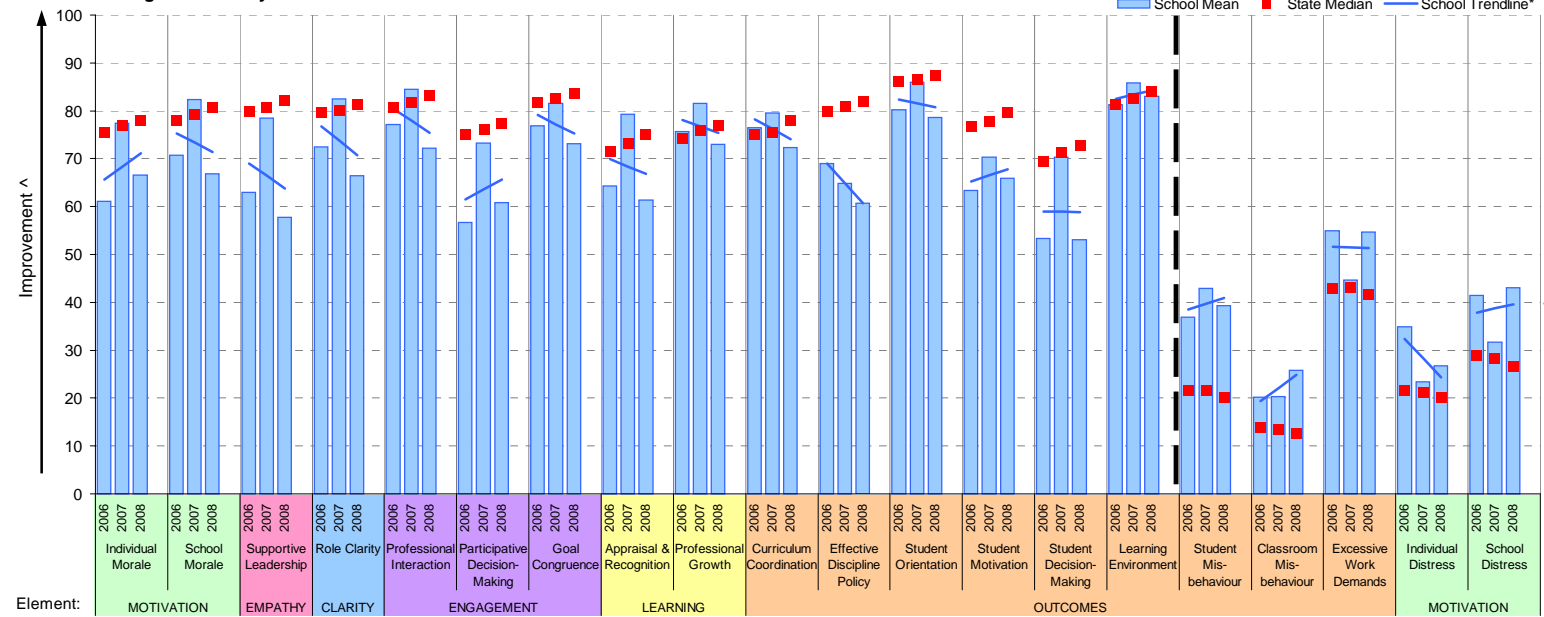


Year	No. of respondents	No. invited	Response Rate
2006	29	30	97%
2007	29	33	88%
2008	29	32	91%

School Mean as percentile (by school type)



School Mean against Primary State Median



Notes: * The school trendline is being trialled. It is only plotted when there is data for each calendar year.

** If there were 6 or less respondents, table data is not shown for confidentiality reasons. If there were 3 or less respondents, graph data is not shown for confidentiality reasons.

^ The higher the school mean, the more positive the outcome for variables 1 to 15. The lower the school mean, the more positive the outcome for variables 16 to 20.

† The higher the school percentile, the more positive the outcome for all variables.

^^ Benchmarks are available for Primary, Secondary, Pri/Sec, Special & SDS schools.

Performance & Development Culture (P&DC)^{††}

NEW

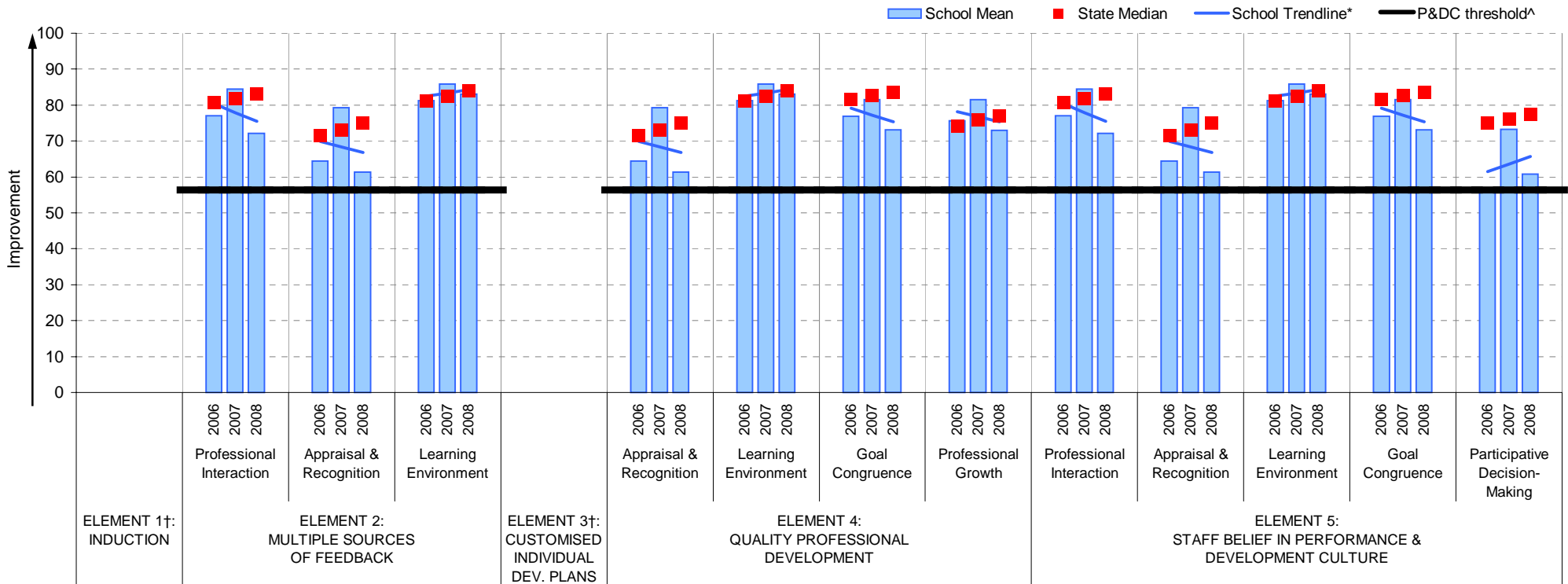
School no: 5074

School name: Lalor West Primary School

Explanation: The data on this page refers to the Staff Opinion Survey.

Source of data: Data transmitted from school staff to DEECD via an online survey application.

School Mean against Primary State Median



Notes:

†† An assessment of the correlation between the P&DC Questionnaire and the Staff Opinion Survey was undertaken using data from Victorian Government schools that completed both surveys from 2005 to 2007 (ie. 699 schools). This led to the identification of the components of the Staff Opinion Survey that could be used to assist schools with the ongoing monitoring of their performance and development culture. Refer to the P&DC website for further information: <http://www.education.vic.gov.au/management/schoolimprovement/panddc/default.htm>. For numerical results relating to the above graph, refer to the Staff Opinion Survey page in this report.

† Note that there is no significant correlation between the Staff Opinion Survey and P&DC elements 1 (Induction) and 3 (Customised Individual Development Plans).

^ The P&DC threshold was derived from the P&DC Questionnaire 'percent favourable' methodology where a school is considered at the standard of accreditation when their Element score is >75% favourable (ie. at least 75% of staff selected the top two response categories in the P&DC Questionnaire).

* The school trendline is only plotted when there is data for each calendar year.

** If there were 3 or less respondents, graph data is not shown for confidentiality reasons.

^^ Benchmarks are available for Primary, Secondary, Pri/Sec, Special & SDS schools.

Staff Sick Leave

School no: 5074

School name: Lalor West Primary School

Explanation: The number of non-certificated and total sick leave days taken per staff member. A detailed explanation on how staff sick leave is calculated is provided in the Annual Reports Frequently Asked Questions page of the Standards website (<http://www.sofweb.vic.edu.au/standards/account/arepq.htm>).

Source of data: Human Resources Management System (HRMS)^.

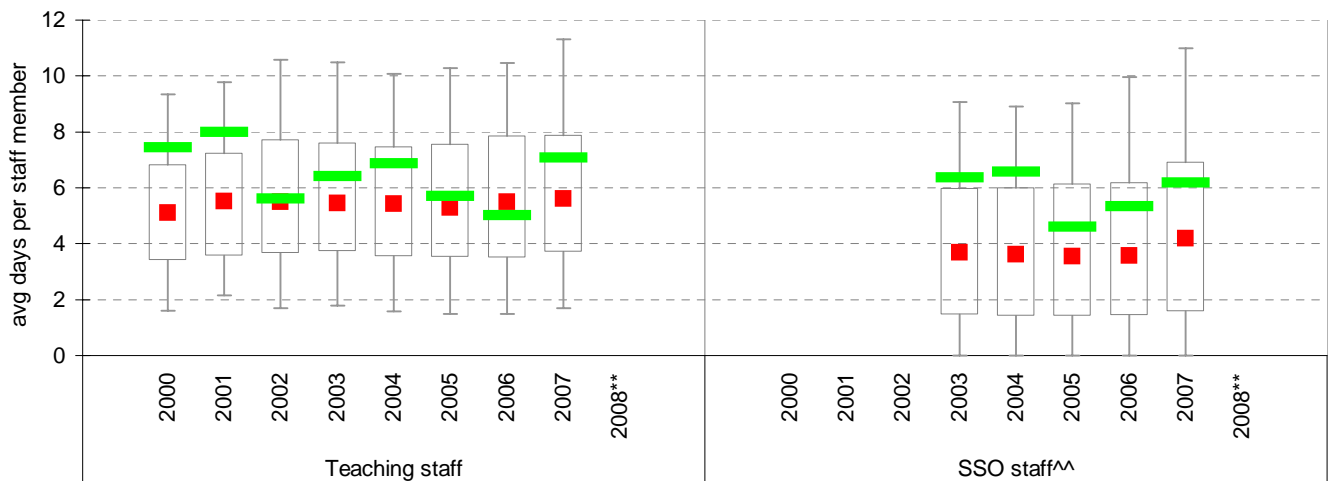
Staff Type	Non-Certificated sick leave days per staff member^									2007 State Median**
	2000	2001	2002	2003	2004	2005	2006	2007	2008**	
Teacher	1.71	1.43	2.16	1.82	2.09	2.12	1.89	2.26		1.53
SSO^^					2.82	2.15	1.21	2.47		1.19

Staff Type	Total sick leave days per staff member^									2007 State Median**
	2000	2001	2002	2003	2004	2005	2006	2007	2008**	
Teacher	7.44	7.99	5.62	6.42	6.88	5.70	5.03	7.08		5.61
SSO^^					6.57	4.61	5.34	6.17		4.20

NON-CERTIFICATED sick leave



TOTAL sick leave

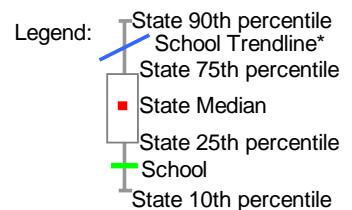


Note: * The school trendline is only plotted when there is data for each calendar year.

** Data for 2008 will be available in April / May of 2009.

^ There may be some discrepancy between the results from CASES & those from HRMS. The latter are considered to be more accurate.

^^ Data for SSO (School Services Officer) staff is only available from 2003.



Teaching Staff Retention

School no: 5074

School name: Lalor West Primary School

Explanation: The retention rate of teaching staff is determined by matching staff payroll records for the last pay in June of one year (Year A), to the last pay in June of the following year (Year B).

Source of data: Human Resources Management System (HRMS).

Teaching Staff*

Year A	Year B	Number of Teaching Staff in Year A	Number of Teaching Staff retained in Year B	Teaching Staff Retention Rate	Statewide Average
2005	2006	25	19	76%	87%
2006	2007	23	18	78%	86%
2007	2008	24	18	75%	84%

Of the 25 teaching service staff at June 2005 (including those on leave without pay), 19 or 76% were still at the school at June 2006. This figure across all Government schools was 87%.

Of the 23 teaching service staff at June 2006 (including those on leave without pay), 18 or 78% were still at the school at June 2007. This figure across all Government schools was 86%.

Of the 24 teaching service staff at June 2007 (including those on leave without pay), 18 or 75% were still at the school at June 2008. This figure across all Government schools was 84%.

Ongoing Teaching Staff*^

Year A	Year B	Number of Ongoing Teaching Staff in Year A	Number of Ongoing Teaching Staff retained in Year B	Ongoing Teaching Staff Retention Rate	Statewide Average
2005	2006	17	14	82%	91%
2006	2007	16	13	81%	90%
2007	2008	17	13	77%	88%

Of the 17 ongoing teaching service staff at June 2005 (including those on leave without pay), 14 or 82% were still at the school at June 2006. This figure across all Government schools was 91%.

Of the 16 ongoing teaching service staff at June 2006 (including those on leave without pay), 13 or 81% were still at the school at June 2007. This figure across all Government schools was 90%.

Of the 17 ongoing teaching service staff at June 2007 (including those on leave without pay), 13 or 77% were still at the school at June 2008. This figure across all Government schools was 88%.

Notes: * Teaching staff includes Principal class, Teacher class and Instructor class. Teaching staff employed as visiting teachers, guidance officers, curriculum consultants, etc. are excluded as they are not charged to a particular school.

^ Not including fixed term staff, except for where staff had changed from ongoing in Year A to fixed term in Year B.

Bank Balances

School no: 5074

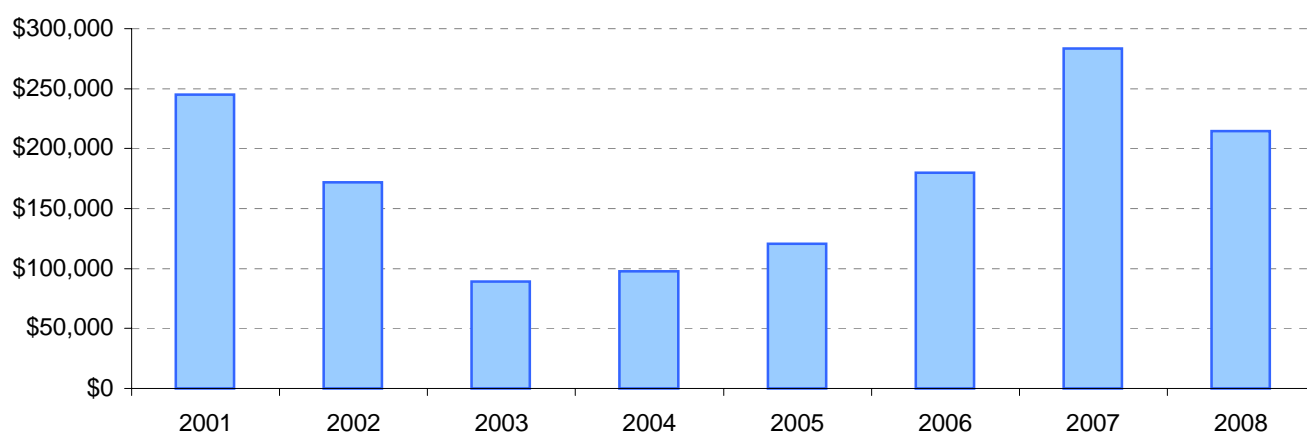
School name: Lalor West Primary School

Explanation: Account balance figures include official and investment accounts, and are calculated by taking the opening balance at 1st January plus the total receipts at 31st December less total payments at 31st December.

Account Balances (Official plus Investment Accounts)

2001	\$245,188	2005	\$120,412
2002	\$172,083	2006	\$179,923
2003	\$89,327	2007	\$283,706
2004	\$97,741	2008	\$214,388

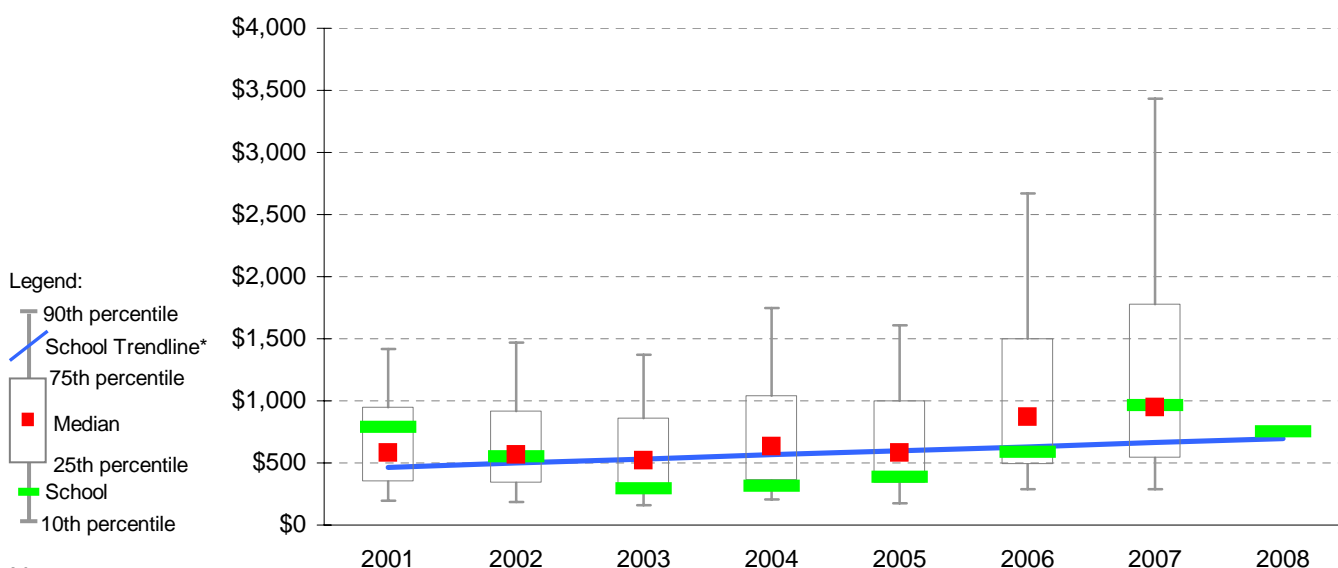
Account Balances



Account Balances (Official plus Investment Accounts) per student[†]

2001	\$791	2005	\$386
2002	\$552	2006	\$590
2003	\$295	2007	\$965
2004	\$316	2008	\$752

School account balances per student enrolled in August census plotted on state Primary benchmarks[^]



Notes:

* The school trendline is being trialled. It is only plotted when there is data for each calendar year.

† The account balance per student has been calculated to enable some comparison to be made between schools.

^ Benchmarks for primary, secondary, pri/sec, SDS, special and language schools.